



January 21, 2021

## Nonfarm Employment Increased by 6,300 Jobs over the Month in December 2020 Arizona Unemployment Rate Decreased to 7.5%

The Arizona seasonally-adjusted unemployment rate decreased to 7.5% in December from 8.0% in November. The U.S. seasonally-adjusted unemployment rate was unchanged at 6.7% in December. Over the month, Arizona's seasonally-adjusted labor force increased by 5,315 individuals or 0.1%. Over the year, labor force levels decreased by 25,201 individuals or 0.7%.

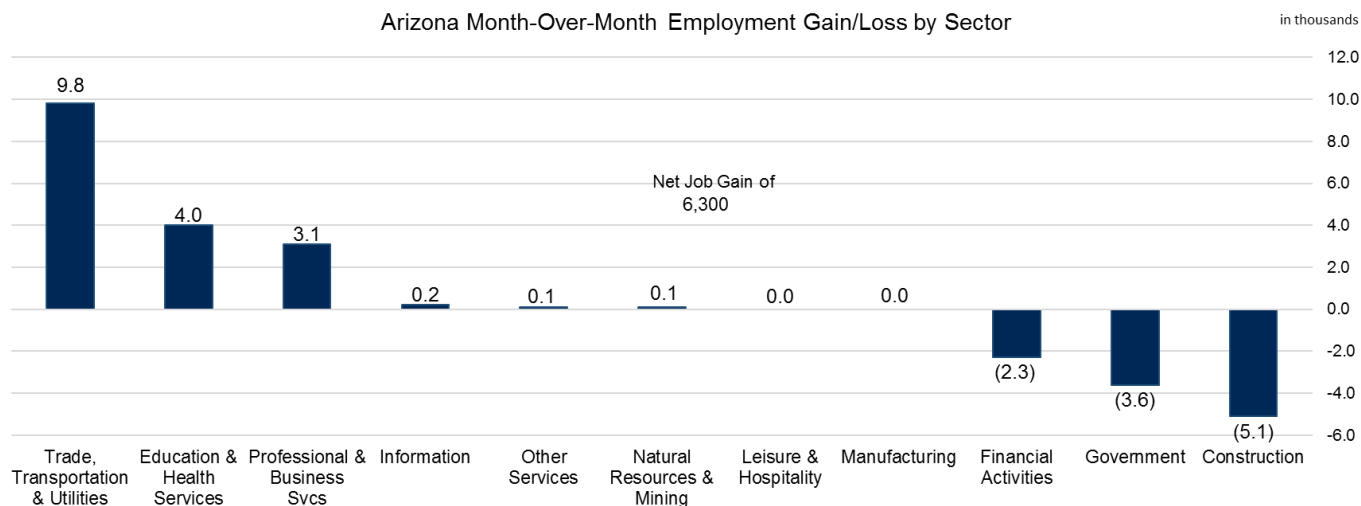
### Over the Month

Arizona nonfarm employment increased by 6,300 jobs or 0.2% in December. Historically (2010-2019), nonfarm employment has averaged a gain of 5,500 jobs in December.

The Government sector recorded a loss of 3,600 jobs in December. The private sector recorded a gain of 9,900 jobs in December. Historically (2010-2019), private sector employment has averaged a gain of 9,600 jobs in December.

<b>Arizona, U.S. Economic Indicators</b>			
<b><u>Unemployment Rate (Seasonally Adj.)</u></b>			
	<b><u>Dec '20</u></b>	<b><u>Nov '20</u></b>	<b><u>Dec '19</u></b>
United States	6.7%	6.7%	3.5%
Arizona	7.5%	8.0%	4.5%
Arizona (Unadj. Rate)	7.3%	7.7%	4.2%
<b><u>Arizona Nonfarm Employment (in Thousands)</u></b>			
	<b><u>Dec '20</u></b>	<b><u>Nov '20</u></b>	<b><u>Dec '19</u></b>
Overall	2,945.3	2,939.0	3,025.6
Over-Month % Chg.	0.2%	1.1%	0.2%
Year-to-Year % Chg.	-2.7%	-2.7%	2.8%

Arizona Month-Over-Month Employment Gain/Loss by Sector



Source: Produced by the Arizona Office of Economic Opportunity in cooperation with the U.S. Dept. of Labor, Bureau of Labor Statistics

Private sector employment gains were reported in the following sectors:

- Trade, Transportation and Utilities (9,800 jobs)
- Education and Health Services (4,000 jobs)
- Professional and Business Services (3,100 jobs)
- Information (200 jobs)

- Other Services (100 jobs)
- Natural Resources and Mining (100 jobs)

No gains or losses were reported in the following sectors:

- Leisure and Hospitality (0 jobs)
- Manufacturing (0 jobs)

Private sector employment losses were reported in the following sectors:

- Construction (-5,100 jobs)
- Financial Activities (-2,300 jobs)

### Over the Year

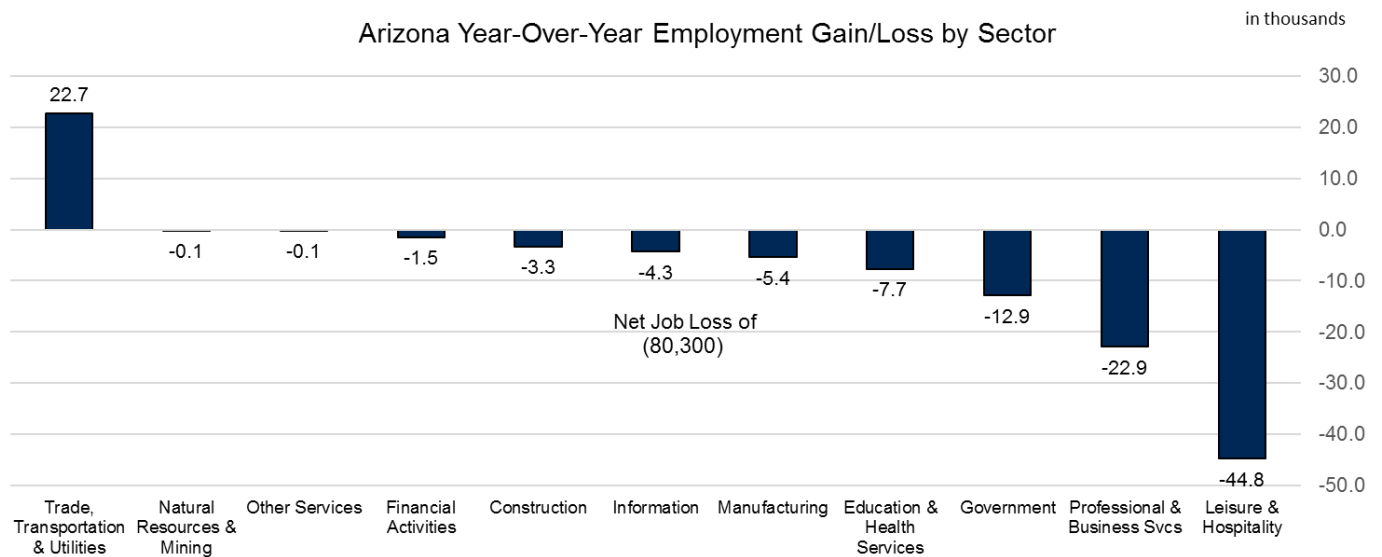
Arizona nonfarm employment decreased by 80,300 jobs or 2.7% in December. A majority of the losses were recorded in private sector employment (-67,400 jobs), while Government recorded losses of 12,900 jobs in December.

Gains were reported in:

- Trade, Transportation and Utilities (22,700 jobs)

Losses were reported in:

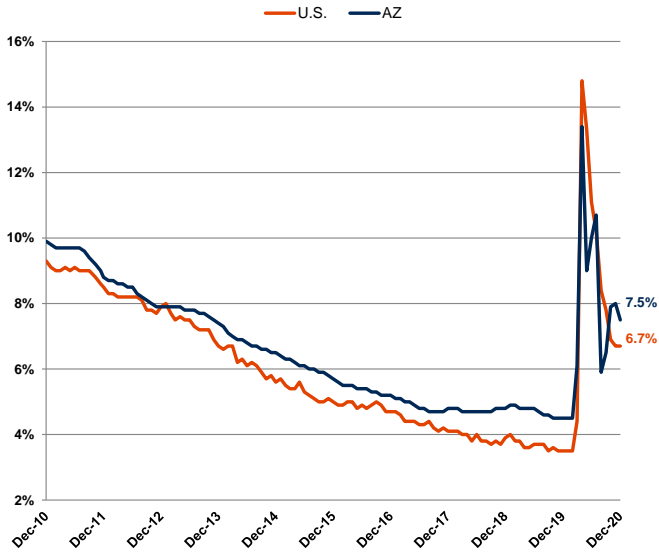
- Leisure and Hospitality (-44,800 jobs)
- Professional and Business Services (-22,900 jobs)
- Education and Health Services (-7,700 jobs)
- Manufacturing (-5,400 jobs)
- Information (-4,300 jobs)
- Construction (-3,300 jobs)
- Financial Activities (-1,500 jobs)
- Other Services (-100 jobs)
- Natural Resources and Mining (-100 jobs)



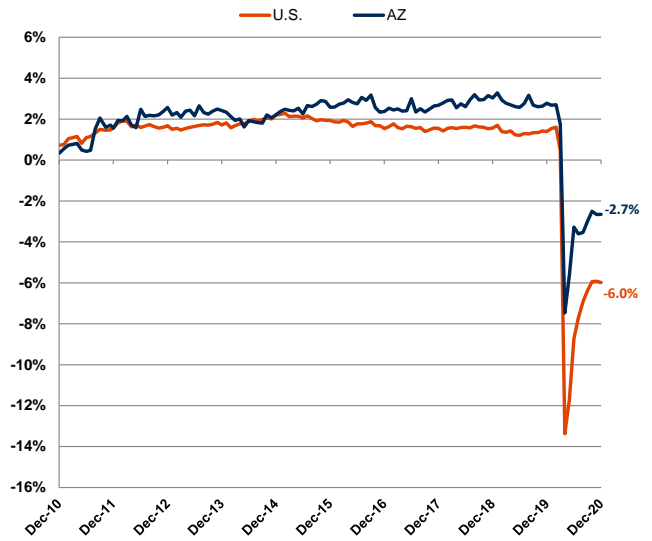
Source: Produced by the Arizona Office of Economic Opportunity in cooperation with the U.S. Dept. of Labor, Bureau of Labor Statistics

# LABOR MARKET TRENDS CHARTS

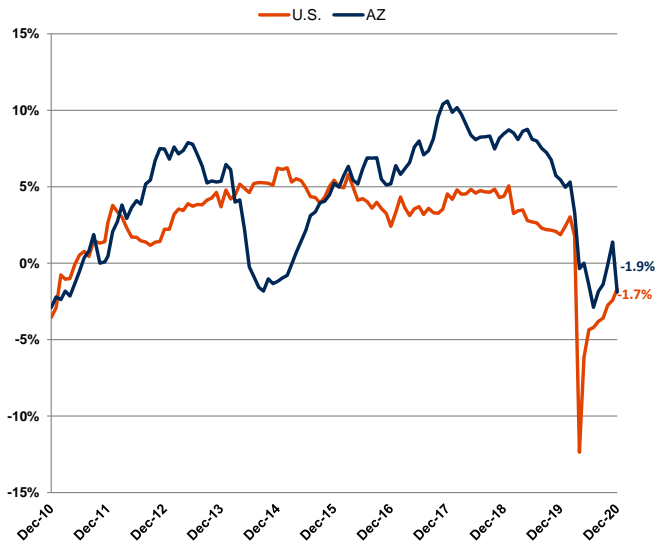
**Arizona & U.S. Unemployment Rate**  
Seasonally Adjusted



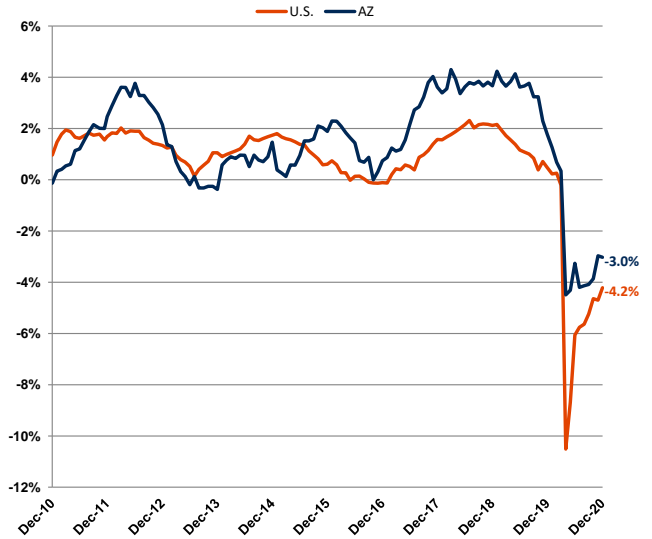
**Arizona & U.S. Nonfarm Employment**  
Year-to-Year Percent Change



**Arizona & U.S. Construction Employment**  
Year-to-Year Percent Change



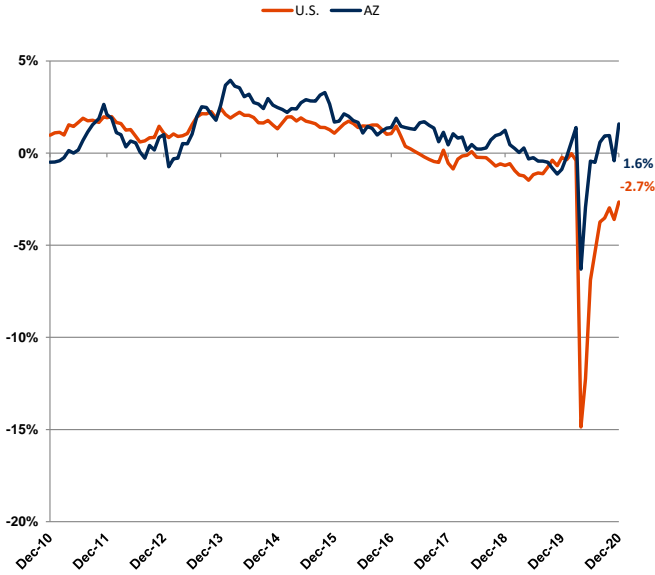
**Arizona & U.S. Manufacturing Employment**  
Year-to-Year Percent Change



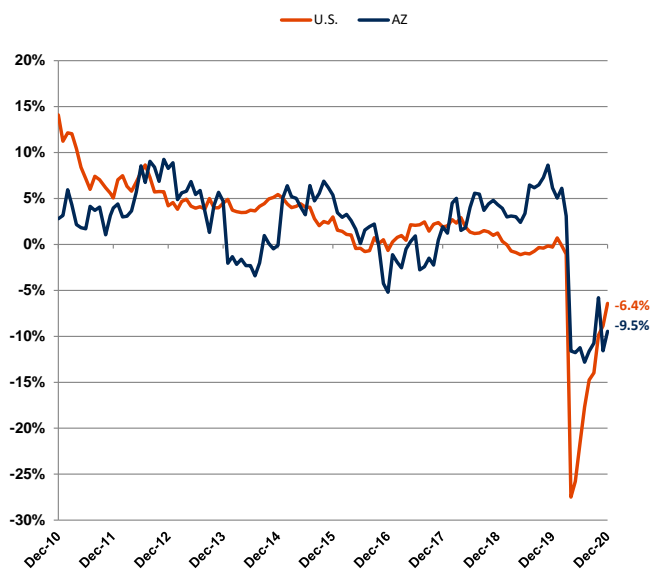
Source: Prepared by the Arizona Office of Economic Opportunity, in cooperation with the U.S. Dept. of Labor, Bureau of Labor Statistics

# LABOR MARKET TRENDS CHARTS

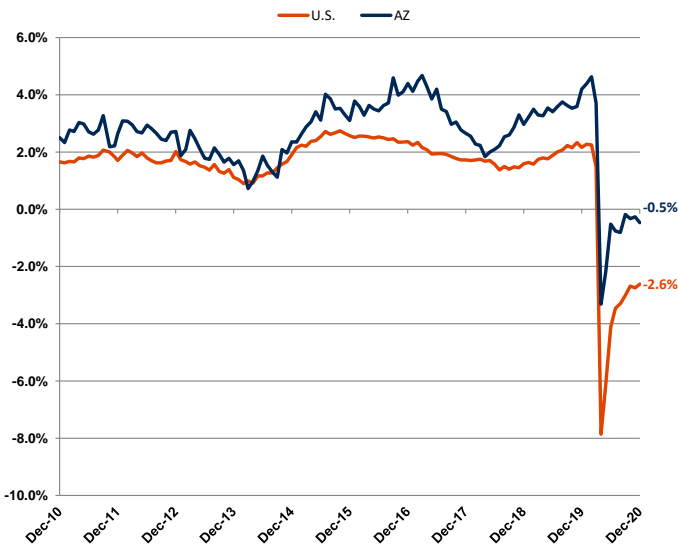
**Arizona & U.S. Retail Trade**  
Year-to-Year Percent Change



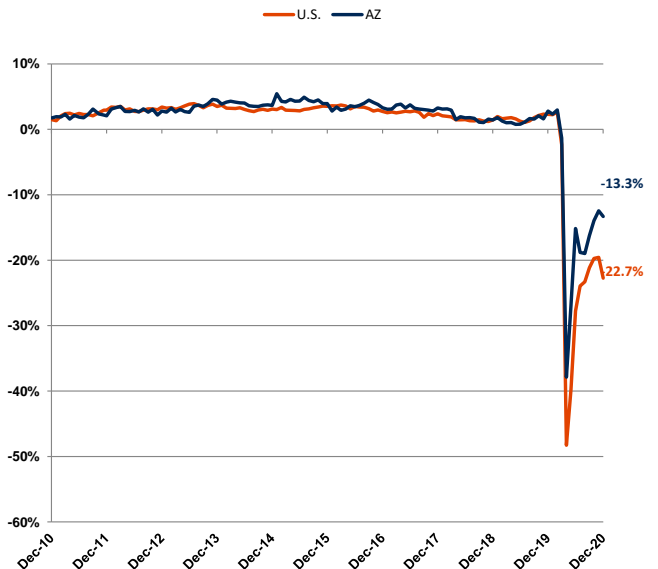
**Arizona & U.S. Employment Services**  
Year-to-Year Percent Change



**Arizona & U.S. Health Care**  
Year-to-Year Percent Change



**Arizona & U.S. Leisure & Hospitality**  
Year-to-Year Percent Change



Source: Prepared by the Arizona Office of Economic Opportunity, in cooperation with the U.S. Dept. of Labor, Bureau of Labor Statistics

Table 1

Labor Force, Employment, Unemployment and Unemployment Rates<sup>(a)</sup>

(in Thousands)

<u>ARIZONA</u>	December	November	December	<u>Monthly/Yearly Change</u>	
	2020 <sup>(c)</sup>	2020 <sup>(d)</sup>	2019 <sup>(d)</sup>	November '20 - December '20	December '19 - December '20
Civilian Labor Force <sup>(e)</sup>	3,567.8	3,578.9	3,611.7	-11.1	-43.9
Unemployment	259.2	276.3	152.2	-17.0	107.1
Unemployment Rate	7.3%	7.7%	4.2%	-0.4	3.1
Unemployment Rate (Seasonally Adjusted) <sup>(f)</sup>	7.5%	8.0%	4.5%	-0.5	3.0
Total Employment	3,308.5	3,302.6	3,459.6	5.9	-151.0
<u>FLAGSTAFF MSA (Coconino County)</u>					
Civilian Labor Force <sup>(e)</sup>	68.3	69.1	77.3	-0.8	-9.0
Unemployment	6.6	6.7	4.2	-0.1	2.4
Unemployment Rate (Unadjusted)	9.6%	9.7%	5.5%	-0.1	4.1
Total Employment	61.7	62.4	73.0	-0.7	-11.3
<u>LAKE HAVASU CITY-KINGMAN MSA (Mohave County)</u>					
Civilian Labor Force <sup>(e)</sup>	85.8	86.3	88.4	-0.5	-2.6
Unemployment	7.2	7.6	4.7	-0.4	2.5
Unemployment Rate (Unadjusted)	8.4%	8.8%	5.3%	-0.4	3.1
Total Employment	78.6	78.7	83.7	-0.1	-5.1
<u>PHOENIX-MESA-SCOTTSDALE MSA (Maricopa &amp; Pinal Counties)</u>					
Civilian Labor Force <sup>(e)</sup>	2,536.4	2,537.3	2,548.7	-0.8	-12.3
Unemployment	175.2	186.7	92.6	-11.5	82.6
Unemployment Rate (Unadjusted)	6.9%	7.4%	3.6%	-0.5	3.3
Total Employment	2,361.2	2,350.6	2,456.1	10.7	-94.9
<u>PRESCOTT MSA (Yavapai County)</u>					
Civilian Labor Force <sup>(e)</sup>	107.7	108.8	107.1	-1.1	0.6
Unemployment	7.0	7.4	4.3	-0.4	2.7
Unemployment Rate (Unadjusted)	6.5%	6.8%	4.0%	-0.3	2.5
Total Employment	100.7	101.5	102.8	-0.8	-2.1
<u>SIERRA VISTA-DOUGLAS MSA (Cochise County)</u>					
Civilian Labor Force <sup>(e)</sup>	51.3	51.7	51.4	-0.4	-0.1
Unemployment	3.3	3.4	2.7	-0.1	0.6
Unemployment Rate (Unadjusted)	6.4%	6.5%	5.2%	-0.1	1.2
Total Employment	48.0	48.3	48.7	-0.3	-0.7

Notes: For notes and source, see end of Table 1

(Continued on next page)

**Table 1 (Cont.)**

**Labor Force, Employment, Unemployment and Unemployment Rates<sup>(a)(b)</sup>**

(in Thousands)

<b>TUCSON MSA (Pima County)</b>	<b>December 2020(c)</b>	<b>November 2020(d)</b>	<b>December 2019(d)</b>	<b>Monthly/Yearly Change</b>	
				<b>November '20 - December '20</b>	<b>December '19 - December '20</b>
<b>Civilian Labor Force<sup>(c)</sup></b>	497.1	498.4	504.2	-1.3	-7.1
<b>Unemployment</b>	36.7	38.5	20.3	-1.8	16.5
<b>Unemployment Rate (Unadjusted)</b>	7.4%	7.7%	4.0%	-0.3	3.4
<b>Total Employment</b>	460.4	459.9	483.9	0.5	-23.5

<b>YUMA MSA (Yuma County)</b>					
<b>Civilian Labor Force<sup>(e)</sup></b>	92.2	96.9	102.0	-4.8	-9.8
<b>Unemployment</b>	11.5	13.8	14.6	-2.4	-3.1
<b>Unemployment Rate (Unadjusted)</b>	12.4%	14.3%	14.3%	-1.9	-1.9
<b>Total Employment</b>	80.7	83.1	87.4	-2.4	-6.7

**Notes:** a) Labor force, unemployment, total employment, and unadjusted unemployment rates are produced by the Local Area Unemployment Statistics (LAUS) program in the Arizona Office of Employment and Population Statistics, in cooperation with the U.S. Dept. of Labor, Bureau of Labor Statistics (BLS). BLS data used as part of the input in producing LAUS data come from the monthly Household Survey, produced by the Census Bureau for the U.S. Department of Labor, Bureau of Labor Statistics.

For more information on the LAUS program, visit this website: <http://www.bls.gov/lau/laufaq.htm>

- c) Preliminary
- d) Revised
- e) Adjusted to Current Population Survey (CPS 2017) to reflect place of residence
- f) Normal seasonal variations have been eliminated to reflect underlying trends

MSA - Metropolitan Statistical Area

NA - Not Available

Source: Prepared by the Arizona Office of Economic Opportunity, in cooperation with the U.S. Dept. of Labor, Bureau of Labor Statistics

**Table 2**  
**Nonfarm Payroll Employment**

(in Thousands, Not Seasonally Adjusted)

ARIZONA <sup>(a)</sup>				Amount Change		Percent Change	
	December	November	December	Monthly	Over-Year	Monthly	Over-Year
	2020(b)	2020(c)	2019(c)	November '20 - December '20	December '19 - December '20	November '20 - December '20	December '19 - December '20
<b>Total Nonfarm Payroll Employment<sup>(c,d)</sup></b>	<b>2,945.3</b>	<b>2,939.0</b>	<b>3,025.6</b>	<b>6.3</b>	<b>-80.3</b>	<b>0.2%</b>	<b>-2.7%</b>
Private Sector	2,520.4	2,510.5	2,587.8	9.9	-67.4	0.4%	-2.6%
Government	424.9	428.5	437.8	-3.6	-12.9	-0.8%	-2.9%
<b>Goods-Producing Industries</b>	<b>357.3</b>	<b>362.3</b>	<b>366.1</b>	<b>-5.0</b>	<b>-8.8</b>	<b>-1.4%</b>	<b>-2.4%</b>
<b>Manufacturing</b>	<b>173.0</b>	<b>173.0</b>	<b>178.4</b>	<b>0.0</b>	<b>-5.4</b>	<b>0.0%</b>	<b>-3.0%</b>
Durable Goods	131.3	130.7	134.4	0.6	-3.1	0.5%	-2.3%
Fabricated Metal	19.2	19.1	20.8	0.1	-1.6	0.5%	-7.7%
Computer and Electronic Parts	35.1	34.9	33.8	0.2	1.3	0.6%	3.8%
Aerospace Products and Parts	31.3	31.2	31.0	0.1	0.3	0.3%	1.0%
Non-durable Goods	41.7	42.3	44.0	-0.6	-2.3	-1.4%	-5.2%
<b>Natural Resources and Mining</b>	<b>13.4</b>	<b>13.3</b>	<b>13.5</b>	<b>0.1</b>	<b>-0.1</b>	<b>0.8%</b>	<b>-0.7%</b>
Metal Ore Mining	11.7	11.5	11.3	0.2	0.4	1.7%	3.5%
<b>Construction</b>	<b>170.9</b>	<b>176.0</b>	<b>174.2</b>	<b>-5.1</b>	<b>-3.3</b>	<b>-2.9%</b>	<b>-1.9%</b>
Buildings	33.7	36.0	36.0	-2.3	-2.3	-6.4%	-6.4%
Heavy	20.7	20.8	21.2	-0.1	-0.5	-0.5%	-2.4%
Specialty Trades	116.5	119.2	117.0	-2.7	-0.5	-2.3%	-0.4%
<b>Service-Providing Industries</b>	<b>2,588.0</b>	<b>2,576.7</b>	<b>2,659.5</b>	<b>11.3</b>	<b>-71.5</b>	<b>0.4%</b>	<b>-2.7%</b>
<b>Private Service Providing</b>	<b>2,163.1</b>	<b>2,148.2</b>	<b>2,221.7</b>	<b>14.9</b>	<b>-58.6</b>	<b>0.7%</b>	<b>-2.6%</b>
<b>Trade, Transportation and Utilities</b>	<b>590.1</b>	<b>580.3</b>	<b>567.4</b>	<b>9.8</b>	<b>22.7</b>	<b>1.7%</b>	<b>4.0%</b>
Trade	448.1	440.6	441.1	7.5	7.0	1.7%	1.6%
Wholesale Trade	103.1	103.1	101.5	0.0	1.6	0.0%	1.6%
Retail Trade	345.0	337.5	339.6	7.5	5.4	2.2%	1.6%
Motor Vehicles and Parts	48.9	48.5	49.4	0.4	-0.5	0.8%	-1.0%
Furniture and Home Furnishings	7.4	7.2	10.5	0.2	-3.1	2.8%	-29.5%
Building Material, Garden Supply	28.6	28.4	26.4	0.2	2.2	0.7%	8.3%
Food and Beverage	63.0	62.9	60.4	0.1	2.6	0.2%	4.3%
Clothing and Accessories	18.5	17.9	23.5	0.6	-5.0	3.4%	-21.3%
General Merchandise	75.3	72.9	70.0	2.4	5.3	3.3%	7.6%
Department Stores	27.7	26.6	27.9	1.1	-0.2	4.1%	-0.7%
Other General merchandise	47.6	46.3	42.1	1.3	5.5	2.8%	13.1%
Transp., Warehousing, and Utilities	142.0	139.7	126.3	2.3	15.7	1.6%	12.4%
Utilities	12.9	12.9	12.6	0.0	0.3	0.0%	2.4%
Transportation and Warehousing	129.1	126.8	113.7	2.3	15.4	1.8%	13.5%
Truck Transportation	24.4	24.4	23.6	0.0	0.8	0.0%	3.4%
<b>Information</b>	<b>44.8</b>	<b>44.6</b>	<b>49.1</b>	<b>0.2</b>	<b>-4.3</b>	<b>0.4%</b>	<b>-8.8%</b>
Telecommunications	14.8	14.8	15.5	0.0	-0.7	0.0%	-4.5%
<b>Financial Activities</b>	<b>231.9</b>	<b>234.2</b>	<b>233.4</b>	<b>-2.3</b>	<b>-1.5</b>	<b>-1.0%</b>	<b>-0.6%</b>
Finance and Insurance	177.7	179.4	176.7	-1.7	1.0	-0.9%	0.6%
Credit Intermediation., Monetary Auth.	92.3	92.7	90.5	-0.4	1.8	-0.4%	2.0%
Financial Investments and Vehicles	20.8	20.9	20.5	-0.1	0.3	-0.5%	1.5%
Insurance Carriers	64.6	65.8	65.7	-1.2	-1.1	-1.8%	-1.7%
Real Estate and Rental and Leasing	54.2	54.8	56.7	-0.6	-2.5	-1.1%	-4.4%
<b>Professional and Business Services</b>	<b>435.8</b>	<b>432.7</b>	<b>458.7</b>	<b>3.1</b>	<b>-22.9</b>	<b>0.7%</b>	<b>-5.0%</b>
Professional, Scientific and Technical Services	164.5	162.4	163.9	2.1	0.6	1.3%	0.4%
Management of Companies and Enterprises	30.5	30.4	30.8	0.1	-0.3	0.3%	-1.0%
Administrative and Waste Services	240.8	239.9	264.0	0.9	-23.2	0.4%	-8.8%
Employment Services	106.3	104.7	117.4	1.6	-11.1	1.5%	-9.5%
Business Support Services	35.8	34.7	41.5	1.1	-5.7	3.2%	-13.7%
Services to Buildings and Dwellings	44.3	45.8	43.5	-1.5	0.8	-3.3%	1.8%
<b>Education and Health Services</b>	<b>472.0</b>	<b>468.0</b>	<b>479.7</b>	<b>4.0</b>	<b>-7.7</b>	<b>0.9%</b>	<b>-1.6%</b>
Educational Services	72.2	70.9	73.7	1.3	-1.5	1.8%	-2.0%
Health Care and Social Assistance	399.8	397.1	406.0	2.7	-6.2	0.7%	-1.5%
Health Care	338.6	336.3	340.2	2.3	-1.6	0.7%	-0.5%
Ambulatory Health Care Services	180.1	178.3	178.2	1.8	1.9	1.0%	1.1%
Hospitals	100.7	100.5	102.3	0.2	-1.6	0.2%	-1.6%
Nursing and Residential Care Facilities	57.8	57.5	59.7	0.3	-1.9	0.5%	-3.2%
Social Assistance	61.2	60.8	65.8	0.4	-4.6	0.7%	-7.0%
<b>Leisure and Hospitality</b>	<b>291.8</b>	<b>291.8</b>	<b>336.6</b>	<b>0.0</b>	<b>-44.8</b>	<b>0.0%</b>	<b>-13.3%</b>
Arts, Entertainment and Recreation	34.6	34.4	47.0	0.2	-12.4	0.6%	-26.4%
Accommodation and Food Services	257.2	257.4	289.6	-0.2	-32.4	-0.1%	-11.2%
Accommodation	33.0	32.3	46.0	0.7	-13.0	2.2%	-28.3%
Food Services and Drinking Places	224.2	225.1	243.6	-0.9	-19.4	-0.4%	-8.0%
<b>Other Services (except Public Administration)</b>	<b>96.7</b>	<b>96.6</b>	<b>96.8</b>	<b>0.1</b>	<b>-0.1</b>	<b>0.1%</b>	<b>-0.1%</b>
<b>Government</b>	<b>424.9</b>	<b>428.5</b>	<b>437.8</b>	<b>-3.6</b>	<b>-12.9</b>	<b>-0.8%</b>	<b>-2.9%</b>
Federal Government	56.9	56.8	56.9	0.1	0.0	0.2%	0.0%
State Government	95.4	97.1	96.9	-1.7	-1.5	-1.8%	-1.5%
State Government Education	57.4	58.7	60.1	-1.3	-2.7	-2.2%	-4.5%
Other State Government	38.0	38.4	36.8	-0.4	1.2	-1.0%	3.3%
Local Government	272.6	274.6	284.0	-2.0	-11.4	-0.7%	-4.0%
Local Government Education	142.0	143.7	149.6	-1.7	-7.6	-1.2%	-5.1%
Other Local Government	130.6	130.9	134.4	-0.3	-3.8	-0.2%	-2.8%

**Note:** For notes and source, see end of Table 2

Table 2 (Cont.)

## Nonfarm Payroll Employment

(in Thousands, Not Seasonally Adjusted)

PHOENIX-MESA-SCOTTSDALE MSA <sup>1</sup>	December 2020(b)	November 2020(c)	December 2019(c)	Amount Change		Percent Change	
				Monthly	Over-Year	Monthly	Over-Year
				November '20 - December '20	December '19 - December '20	November '20 - December '20	December '19 - December '20
<b>Total Nonfarm Payroll Employment<sup>(c,d)</sup></b>	<b>2,198.8</b>	<b>2,189.7</b>	<b>2,249.5</b>	<b>9.1</b>	<b>-50.7</b>	<b>0.4%</b>	<b>-2.3%</b>
Private Sector	1,950.7	1,940.3	1,994.4	10.4	-43.7	0.5%	-2.2%
Government	248.1	249.4	255.1	-1.3	-7.0	-0.5%	-2.7%
<b>Goods-Producing Industries</b>	<b>270.2</b>	<b>274.3</b>	<b>274.3</b>	<b>-4.1</b>	<b>-4.1</b>	<b>-1.5%</b>	<b>-1.5%</b>
<b>Manufacturing</b>	<b>132.2</b>	<b>132.0</b>	<b>135.0</b>	<b>0.2</b>	<b>-2.8</b>	<b>0.2%</b>	<b>-2.1%</b>
Durable Goods	97.7	97.5	99.0	0.2	-1.3	0.2%	-1.3%
Computer and Electronic Parts	31.2	31.0	29.8	0.2	1.4	0.6%	4.7%
Aerospace Products and Parts	16.7	16.6	17.0	0.1	-0.3	0.6%	-1.8%
Nondurable Goods	34.5	34.5	36.0	0.0	-1.5	0.0%	-4.2%
<b>Natural Resources and Mining</b>	<b>3.3</b>	<b>3.3</b>	<b>3.6</b>	<b>0.0</b>	<b>-0.3</b>	<b>0.0%</b>	<b>-8.3%</b>
<b>Construction</b>	<b>134.7</b>	<b>139.0</b>	<b>135.7</b>	<b>-4.3</b>	<b>-1.0</b>	<b>-3.1%</b>	<b>-0.7%</b>
Buildings	28.5	30.3	28.5	-1.8	0.0	-5.9%	0.0%
Heavy	15.9	16.0	16.5	-0.1	-0.6	-0.6%	-3.6%
Specialty Trades	90.3	92.7	90.7	-2.4	-0.4	-2.6%	-0.4%
<b>Service-Providing Industries</b>	<b>1,928.6</b>	<b>1,915.4</b>	<b>1,975.2</b>	<b>13.2</b>	<b>-46.6</b>	<b>0.7%</b>	<b>-2.4%</b>
<b>Private Service Providing</b>	<b>1,680.5</b>	<b>1,666.0</b>	<b>1,720.1</b>	<b>14.5</b>	<b>-39.6</b>	<b>0.9%</b>	<b>-2.3%</b>
<b>Trade, Transportation and Utilities</b>	<b>444.6</b>	<b>436.4</b>	<b>430.8</b>	<b>8.2</b>	<b>13.8</b>	<b>1.9%</b>	<b>3.2%</b>
Trade	336.4	329.8	332.1	6.6	4.3	2.0%	1.3%
Wholesale Trade	87.5	87.6	85.5	-0.1	2.0	-0.1%	2.3%
Retail Trade	248.9	242.2	246.6	6.7	2.3	2.8%	0.9%
Motor Vehicles and Parts	35.5	35.3	36.2	0.2	-0.7	0.6%	-1.9%
Building Material, Garden Supply	20.3	20.0	18.6	0.3	1.7	1.5%	9.1%
Food and Beverage	43.5	43.5	42.0	0.0	1.5	0.0%	3.6%
General Merchandise	51.5	49.6	47.4	1.9	4.1	3.8%	8.6%
Department Stores	18.8	18.0	20.2	0.8	-1.4	4.4%	-6.9%
Other General merchandise	32.7	31.6	27.2	1.1	5.5	3.5%	20.2%
Transportation, Warehousing and Utilities	108.2	106.6	98.7	1.6	9.5	1.5%	9.6%
Utilities	8.6	8.6	8.4	0.0	0.2	0.0%	2.4%
Transportation and warehousing	99.6	98.0	90.3	1.6	9.3	1.6%	10.3%
Truck transportation	20.2	20.2	18.2	0.0	2.0	0.0%	11.0%
<b>Information</b>	<b>37.6</b>	<b>37.4</b>	<b>40.9</b>	<b>0.2</b>	<b>-3.3</b>	<b>0.5%</b>	<b>-8.1%</b>
Telecommunications	12.4	12.4	13.2	0.0	-0.8	0.0%	-6.1%
<b>Financial Activities</b>	<b>206.0</b>	<b>207.6</b>	<b>205.7</b>	<b>-1.6</b>	<b>0.3</b>	<b>-0.8%</b>	<b>0.1%</b>
Finance and Insurance	161.9	163.5	159.6	-1.6	2.3	-1.0%	1.4%
Credit Intermediation., Monetary Auth.	86.7	87.3	83.5	-0.6	3.2	-0.7%	3.8%
Financial Investments and Vehicles	17.8	18.0	18.2	-0.2	-0.4	-1.1%	-2.2%
Insurance Carriers	57.4	58.2	57.9	-0.8	-0.5	-1.4%	-0.9%
Real Estate and Rental and Leasing	44.1	44.1	46.1	0.0	-2.0	0.0%	-4.3%
<b>Professional and Business Services</b>	<b>366.8</b>	<b>363.8</b>	<b>380.1</b>	<b>3.0</b>	<b>-13.3</b>	<b>0.8%</b>	<b>-3.5%</b>
Professional, Scientific and Technical Services	134.7	133.6	134.1	1.1	0.6	0.8%	0.4%
Management of Companies and Enterprises	28.4	28.3	28.6	0.1	-0.2	0.4%	-0.7%
Administrative and Waste Services	203.7	201.9	217.4	1.8	-13.7	0.9%	-6.3%
Employment Services	93.4	91.8	103.7	1.6	-10.3	1.7%	-9.9%
Business Support Services	25.7	25.5	28.5	0.2	-2.8	0.8%	-9.8%
Services to Buildings and Dwellings	36.7	37.6	33.6	-0.9	3.1	-2.4%	9.2%
<b>Education and Health Services</b>	<b>349.8</b>	<b>346.1</b>	<b>352.2</b>	<b>3.7</b>	<b>-2.4</b>	<b>1.1%</b>	<b>-0.7%</b>
Educational Services	61.1	60.1	61.6	1.0	-0.5	1.7%	-0.8%
Health Care and Social Assistance	288.7	286.0	290.6	2.7	-1.9	0.9%	-0.7%
Health Care	244.5	242.0	242.9	2.5	1.6	1.0%	0.7%
Ambulatory Health Care Services	138.0	135.5	134.9	2.5	3.1	1.8%	2.3%
Hospitals	66.4	66.4	66.7	0.0	-0.3	0.0%	-0.4%
Nursing and Residential Care Facilities	40.1	40.1	41.3	0.0	-1.2	0.0%	-2.9%
Social Assistance	44.2	44.0	47.7	0.2	-3.5	0.5%	-7.3%
<b>Leisure and Hospitality</b>	<b>203.4</b>	<b>202.2</b>	<b>238.0</b>	<b>1.2</b>	<b>-34.6</b>	<b>0.6%</b>	<b>-14.5%</b>
Arts, Entertainment and Recreation	27.4	27.1	37.1	0.3	-9.7	1.1%	-26.1%
Accommodation and Food Services	176.0	175.1	200.9	0.9	-24.9	0.5%	-12.4%
Accommodation	16.6	16.7	26.0	-0.1	-9.4	-0.6%	-36.2%
Food Services and Drinking Places	159.4	158.4	174.9	1.0	-15.5	0.6%	-8.9%
<b>Other Services (except Public Administration)</b>	<b>72.3</b>	<b>72.5</b>	<b>72.4</b>	<b>-0.2</b>	<b>-0.1</b>	<b>-0.3%</b>	<b>-0.1%</b>
<b>Government</b>	<b>248.1</b>	<b>249.4</b>	<b>255.1</b>	<b>-1.3</b>	<b>-7.0</b>	<b>-0.5%</b>	<b>-2.7%</b>
Federal Government	23.2	23.2	23.6	0.0	-0.4	0.0%	-1.7%
State Government	55.8	56.6	54.1	-0.8	1.7	-1.4%	3.1%
State Government Education	29.4	29.9	28.2	-0.5	1.2	-1.7%	4.3%
Local Government	169.1	169.6	177.4	-0.5	-8.3	-0.3%	-4.7%
Local Government Education	91.6	92.1	98.3	-0.5	-6.7	-0.5%	-6.8%

Note: 1) Phoenix-Mesa-Scottsdale Metropolitan Area includes Maricopa and Pinal counties. For other notes and source, see end of Table 2



Table 2 (Cont.)

## Nonfarm Payroll Employment

(in Thousands, Not Seasonally Adjusted)

TUCSON MSA <sup>3</sup>	December 2020(b)	November 2020(c)	December 2019(c)	Amount Change		Percent Change	
				Monthly	Over-Year	Monthly	Over-Year
				November '20 - December '20	December '19 - December '20	November '20 - December '20	December '19 - December '20
<b>Total Nonfarm Payroll Employment<sup>(c,d)</sup></b>	<b>385.0</b>	<b>384.7</b>	<b>398.5</b>	<b>0.3</b>	<b>-13.5</b>	<b>0.1%</b>	<b>-3.4%</b>
Private Sector	306.3	305.4	315.9	0.9	-9.6	0.3%	-3.0%
Government	78.7	79.3	82.6	-0.6	-3.9	-0.8%	-4.7%
<b>Goods-Producing Industries</b>	<b>46.9</b>	<b>46.7</b>	<b>47.9</b>	<b>0.2</b>	<b>-1.0</b>	<b>0.4%</b>	<b>-2.1%</b>
<b>Manufacturing</b>	<b>26.4</b>	<b>26.2</b>	<b>27.7</b>	<b>0.2</b>	<b>-1.3</b>	<b>0.8%</b>	<b>-4.7%</b>
Aerospace Products and Parts	14.4	14.4	13.8	0.0	0.6	0.0%	4.3%
<b>Natural Resources and Mining</b>	<b>1.8</b>	<b>1.8</b>	<b>1.9</b>	<b>0.0</b>	<b>-0.1</b>	<b>0.0%</b>	<b>-5.3%</b>
<b>Construction</b>	<b>18.7</b>	<b>18.7</b>	<b>18.3</b>	<b>0.0</b>	<b>0.4</b>	<b>0.0%</b>	<b>2.2%</b>
Specialty Trades	14.1	14.3	14.0	-0.2	0.1	-1.4%	0.7%
<b>Service-Providing Industries</b>	<b>338.1</b>	<b>338.0</b>	<b>350.6</b>	<b>0.1</b>	<b>-12.5</b>	<b>0.0%</b>	<b>-3.6%</b>
<b>Private Service Providing</b>	<b>259.4</b>	<b>258.7</b>	<b>268.0</b>	<b>0.7</b>	<b>-8.6</b>	<b>0.3%</b>	<b>-3.2%</b>
<b>Trade, Transportation and Utilities</b>	<b>70.9</b>	<b>69.8</b>	<b>64.4</b>	<b>1.1</b>	<b>6.5</b>	<b>1.6%</b>	<b>10.1%</b>
Trade	52.6	51.8	49.6	0.8	3.0	1.5%	6.0%
Wholesale Trade	6.8	6.7	7.5	0.1	-0.7	1.5%	-9.3%
Retail Trade	45.8	45.1	42.1	0.7	3.7	1.6%	8.8%
General Merchandise	10.8	10.3	9.7	0.5	1.1	4.9%	11.3%
Department Stores	4.2	3.9	4.2	0.3	0.0	7.7%	0.0%
Other General Merchandise	6.6	6.4	5.5	0.2	1.1	3.1%	20.0%
Food and Beverage Stores	9.5	9.5	9.0	0.0	0.5	0.0%	5.6%
Transportation, Warehousing and Utilities	18.3	18.0	14.8	0.3	3.5	1.7%	23.6%
Information	4.1	4.1	5.4	0.0	-1.3	0.0%	-24.1%
<b>Financial Activities</b>	<b>16.3</b>	<b>16.4</b>	<b>17.3</b>	<b>-0.1</b>	<b>-1.0</b>	<b>-0.6%</b>	<b>-5.8%</b>
<b>Professional and Business Services</b>	<b>45.6</b>	<b>45.4</b>	<b>52.2</b>	<b>0.2</b>	<b>-6.6</b>	<b>0.4%</b>	<b>-12.6%</b>
Professional, Scientific and Technical Services	18.7	18.2	19.1	0.5	-0.4	2.7%	-2.1%
Administrative and Waste Services	26.3	27.0	31.4	-0.7	-5.1	-2.6%	-16.2%
Employment Services	10.1	10.0	11.7	0.1	-1.6	1.0%	-13.7%
Business Support Services	8.6	8.5	9.6	0.1	-1.0	1.2%	-10.4%
<b>Education and Health Services</b>	<b>67.7</b>	<b>67.3</b>	<b>70.1</b>	<b>0.4</b>	<b>-2.4</b>	<b>0.6%</b>	<b>-3.4%</b>
Health Care	51.3	51.1	51.6	0.2	-0.3	0.4%	-0.6%
Ambulatory Health Care Services	23.6	23.5	23.4	0.1	0.2	0.4%	0.9%
Hospitals	17.2	17.1	17.4	0.1	-0.2	0.6%	-1.1%
Nursing and Residential Care Facilities	10.5	10.5	10.8	0.0	-0.3	0.0%	-2.8%
<b>Leisure and Hospitality</b>	<b>41.3</b>	<b>42.2</b>	<b>44.7</b>	<b>-0.9</b>	<b>-3.4</b>	<b>-2.1%</b>	<b>-7.6%</b>
Accommodations and Food Services	36.5	37.4	39.6	-0.9	-3.1	-2.4%	-7.8%
Accommodations	5.5	5.5	7.2	0.0	-1.7	0.0%	-23.6%
Food Services and Drinking Places	31.0	31.9	32.4	-0.9	-1.4	-2.8%	-4.3%
<b>Other Services (except Public Administration)</b>	<b>13.5</b>	<b>13.5</b>	<b>13.9</b>	<b>0.0</b>	<b>-0.4</b>	<b>0.0%</b>	<b>-2.9%</b>
<b>Government</b>	<b>78.7</b>	<b>79.3</b>	<b>82.6</b>	<b>-0.6</b>	<b>-3.9</b>	<b>-0.8%</b>	<b>-4.7%</b>
Federal Government	12.9	12.9	13.1	0.0	-0.2	0.0%	-1.5%
State Government	25.0	25.5	27.8	-0.5	-2.8	-2.0%	-10.1%
State Government Education	20.0	20.5	23.1	-0.5	-3.1	-2.4%	-13.4%
Local Government	40.8	40.9	41.7	-0.1	-0.9	-0.2%	-2.2%
Local Government Education	22.9	22.8	22.3	0.1	0.6	0.4%	2.7%

Note: 3) Tucson Metropolitan Area includes all of Pima County. For other notes and source, see end of Table 2.

Table 2 (Cont.)

## Nonfarm Payroll Employment

(in Thousands, Not Seasonally Adjusted)

YUMA MSA <sup>4</sup>	December 2020(b)	November 2020(c)	December 2019(c)	Amount Change		Percent Change	
				Monthly	Over-Year	Monthly	Over-Year
				November '20 - December '20	December '19 - December '20	November '20 - December '20	December '19 - December '20
<b>Total Nonfarm Payroll Employment<sup>(c,d)</sup></b>	<b>54.7</b>	<b>54.8</b>	<b>59.2</b>	<b>-0.1</b>	<b>-4.5</b>	<b>-0.2%</b>	<b>-7.6%</b>
Private Sector	40.3	40.4	44.4	-0.1	-4.1	-0.2%	-9.2%
Government	14.4	14.4	14.8	0.0	-0.4	0.0%	-2.7%
<b>Goods-Producing Industries</b>	<b>5.3</b>	<b>5.4</b>	<b>5.9</b>	<b>-0.1</b>	<b>-0.6</b>	<b>-1.9%</b>	<b>-10.2%</b>
Manufacturing	2.8	2.9	2.8	-0.1	0.0	-3.4%	0.0%
Natural Resources and Construction	2.5	2.5	3.1	0.0	-0.6	0.0%	-19.4%
<b>Service-Providing Industries</b>	<b>49.4</b>	<b>49.4</b>	<b>53.3</b>	<b>0.0</b>	<b>-3.9</b>	<b>0.0%</b>	<b>-7.3%</b>
Private Service Providing	35.0	35.0	38.5	0.0	-3.5	0.0%	-9.1%
Trade, Transportation and Utilities	12.1	11.9	12.2	0.2	-0.1	1.7%	-0.8%
Information	0.4	0.4	0.4	0.0	0.0	0.0%	0.0%
Financial Activities	2.1	2.1	2.1	0.0	0.0	0.0%	0.0%
Professional and Business Services	5.8	5.7	6.7	0.1	-0.9	1.8%	-13.4%
Education and Health Services	7.7	7.6	8.7	0.1	-1.0	1.3%	-11.5%
Leisure and Hospitality	5.0	5.4	6.6	-0.4	-1.6	-7.4%	-24.2%
Other Services (except Public Administration)	1.9	1.9	1.8	0.0	0.1	0.0%	5.6%
<b>Government</b>	<b>14.4</b>	<b>14.4</b>	<b>14.8</b>	<b>0.0</b>	<b>-0.4</b>	<b>0.0%</b>	<b>-2.7%</b>
Federal Government	3.8	3.7	3.7	0.1	0.1	2.7%	2.7%
State and Local Government	10.6	10.7	11.1	-0.1	-0.5	-0.9%	-4.5%

Note: 4) Yuma Metropolitan Area includes all of Yuma County. For other notes and source, see end of Table 2

FLAGSTAFF MSA <sup>5</sup>	December 2020(b)	November 2020(c)	December 2019(c)	Amount Change		Percent Change	
				Monthly	Over-Year	Monthly	Over-Year
				November '20 - December '20	December '19 - December '20	November '20 - December '20	December '19 - December '20
<b>Total Nonfarm Payroll Employment<sup>(c,d)</sup></b>	<b>57.7</b>	<b>58.2</b>	<b>68.0</b>	<b>-0.5</b>	<b>-10.3</b>	<b>-0.9%</b>	<b>-15.1%</b>
Private Sector	40.3	40.3	48.2	0.0	-7.9	0.0%	-16.4%
Government	17.4	17.9	19.8	-0.5	-2.4	-2.8%	-12.1%
<b>Goods-Producing Industries</b>	<b>6.2</b>	<b>6.2</b>	<b>6.4</b>	<b>0.0</b>	<b>-0.2</b>	<b>0.0%</b>	<b>-3.1%</b>
Manufacturing	3.8	3.8	3.8	0.0	0.0	0.0%	0.0%
Natural Resources and Construction	2.4	2.4	2.6	0.0	-0.2	0.0%	-7.7%
<b>Service-Providing Industries</b>	<b>51.5</b>	<b>52.0</b>	<b>61.6</b>	<b>-0.5</b>	<b>-10.1</b>	<b>-1.0%</b>	<b>-16.4%</b>
Private Service Providing	34.1	34.1	41.8	0.0	-7.7	0.0%	-18.4%
Trade, Transportation and Utilities	9.7	9.6	9.8	0.1	-0.1	1.0%	-1.0%
Information	0.4	0.4	0.4	0.0	0.0	0.0%	0.0%
Financial Activities	1.5	1.5	1.5	0.0	0.0	0.0%	0.0%
Professional and Business Services	3.4	3.5	3.2	-0.1	0.2	-2.9%	6.3%
Education and Health Services	8.9	8.9	9.6	0.0	-0.7	0.0%	-7.3%
Leisure and Hospitality	8.8	8.7	15.5	0.1	-6.7	1.1%	-43.2%
Other Services (except Public Administration)	1.4	1.5	1.8	-0.1	-0.4	-6.7%	-22.2%
<b>Government</b>	<b>17.4</b>	<b>17.9</b>	<b>19.8</b>	<b>-0.5</b>	<b>-2.4</b>	<b>-2.8%</b>	<b>-12.1%</b>
Federal Government	2.5	2.5	2.4	0.0	0.1	0.0%	4.2%
State and Local Government	14.9	15.4	17.4	-0.5	-2.5	-3.2%	-14.4%

Notes: 5) Flagstaff Metropolitan Area includes all of Coconino County. For other notes and source, see end of Table 2

Table 2 (Cont.)

## Nonfarm Payroll Employment

(in Thousands, Not Seasonally Adjusted)

PRESCOTT MSA <sup>6</sup>	December 2020(b)	November 2020(c)	December 2019(c)	Amount Change		Percent Change	
				Monthly	Over-Year	Monthly	Over-Year
				November '20 - December '20	December '19 - December '20	November '20 - December '20	December '19 - December '20
<b>Total Nonfarm Payroll Employment<sup>(c,d)</sup></b>	<b>66.4</b>	<b>67.0</b>	<b>66.6</b>	<b>-0.6</b>	<b>-0.2</b>	<b>-0.9%</b>	<b>-0.3%</b>
Private Sector	55.9	56.0	55.5	-0.1	0.4	-0.2%	0.7%
Government	10.5	11.0	11.1	-0.5	-0.6	-4.5%	-5.4%
<b>Goods-Producing Industries</b>	<b>10.6</b>	<b>10.5</b>	<b>10.0</b>	<b>0.1</b>	<b>0.6</b>	<b>1.0%</b>	<b>6.0%</b>
Manufacturing	3.9	3.8	3.7	0.1	0.2	2.6%	5.4%
Natural Resources and Construction	6.7	6.7	6.3	0.0	0.4	0.0%	6.3%
<b>Service-Providing Industries</b>	<b>55.8</b>	<b>56.5</b>	<b>56.6</b>	<b>-0.7</b>	<b>-0.8</b>	<b>-1.2%</b>	<b>-1.4%</b>
Private Service Providing	45.3	45.5	45.5	-0.2	-0.2	-0.4%	-0.4%
Trade, Transportation and Utilities	13.0	12.9	13.2	0.1	-0.2	0.8%	-1.5%
Information	0.5	0.5	0.5	0.0	0.0	0.0%	0.0%
Financial Activities	2.1	2.1	2.1	0.0	0.0	0.0%	0.0%
Professional and Business Services	4.3	4.3	4.3	0.0	0.0	0.0%	0.0%
Education and Health Services	12.6	12.5	12.6	0.1	0.0	0.8%	0.0%
Leisure and Hospitality	10.7	11.0	10.4	-0.3	0.3	-2.7%	2.9%
Other Services (except Public Administration)	2.1	2.2	2.4	-0.1	-0.3	-4.5%	-12.5%
<b>Government</b>	<b>10.5</b>	<b>11.0</b>	<b>11.1</b>	<b>-0.5</b>	<b>-0.6</b>	<b>-4.5%</b>	<b>-5.4%</b>
Federal Government	1.6	1.6	1.5	0.0	0.1	0.0%	6.7%
State and Local Government	8.9	9.4	9.6	-0.5	-0.7	-5.3%	-7.3%

Note: 6) Prescott Metropolitan Area includes all of Yavapai County. For other notes and source, see end of Table 2

LAKE HAVASU CITY-KINGMAN MSA<sup>7</sup>

LAKE HAVASU CITY-KINGMAN MSA <sup>7</sup>	December 2020(b)	November 2020(c)	December 2019(c)	Amount Change		Percent Change	
				Monthly	Over-Year	Monthly	Over-Year
				November '20 - December '20	December '19 - December '20	November '20 - December '20	December '19 - December '20
<b>Total Nonfarm Payroll Employment<sup>(c,d)</sup></b>	<b>51.3</b>	<b>51.5</b>	<b>53.3</b>	<b>-0.2</b>	<b>-2.0</b>	<b>-0.4%</b>	<b>-3.8%</b>
Private Sector	43.5	43.5	44.9	0.0	-1.4	0.0%	-3.1%
Government	7.8	8.0	8.4	-0.2	-0.6	-2.5%	-7.1%
<b>Goods-Producing Industries</b>	<b>6.8</b>	<b>6.7</b>	<b>6.6</b>	<b>0.1</b>	<b>0.2</b>	<b>1.5%</b>	<b>3.0%</b>
Manufacturing	3.0	3.0	3.1	0.0	-0.1	0.0%	-3.2%
Natural Resources and Construction	3.8	3.7	3.5	0.1	0.3	2.7%	8.6%
<b>Service-Providing Industries</b>	<b>44.5</b>	<b>44.8</b>	<b>46.7</b>	<b>-0.3</b>	<b>-2.2</b>	<b>-0.7%</b>	<b>-4.7%</b>
Private Service Providing	36.7	36.8	38.3	-0.1	-1.6	-0.3%	-4.2%
Trade, Transportation and Utilities	13.9	13.8	13.1	0.1	0.8	0.7%	6.1%
Information	0.5	0.5	0.5	0.0	0.0	0.0%	0.0%
Financial Activities	1.8	1.8	1.8	0.0	0.0	0.0%	0.0%
Professional and Business Services	4.7	4.9	4.4	-0.2	0.3	-4.1%	6.8%
Education and Health Services	8.8	8.8	9.3	0.0	-0.5	0.0%	-5.4%
Leisure and Hospitality	5.2	5.2	7.3	0.0	-2.1	0.0%	-28.8%
Other Services (except Public Administration)	1.8	1.8	1.9	0.0	-0.1	0.0%	-5.3%
<b>Government</b>	<b>7.8</b>	<b>8.0</b>	<b>8.4</b>	<b>-0.2</b>	<b>-0.6</b>	<b>-2.5%</b>	<b>-7.1%</b>
Federal Government	0.5	0.5	0.5	0.0	0.0	0.0%	0.0%
State and Local Government	7.3	7.5	7.9	-0.2	-0.6	-2.7%	-7.6%

Note: 7) Lake Havasu City-Kingman Metropolitan Area includes all of Mohave County  
For other notes and source, see next page

Table 2 (Cont.)

## Nonfarm Payroll Employment

(in Thousands, Not Seasonally Adjusted)

**SIERRA VISTA-DOUGLAS MSA<sup>8</sup>**

				Amount Change		Percent Change	
	December 2020(b)	November 2020(c)	December 2019(c)	Monthly	Over-Year	Monthly	Over-Year
				November '20 - December '20	December '19 - December '20	November '20 - December '20	December '19 - December '20
<b>Total Nonfarm Payroll Employment<sup>(c,d)</sup></b>	<b>34.6</b>	<b>34.6</b>	<b>34.7</b>	<b>0.0</b>	<b>-0.1</b>	<b>0.0%</b>	<b>-0.3%</b>
Private Sector	23.8	23.7	23.3	0.1	0.5	0.4%	2.1%
Government	10.8	10.9	11.4	-0.1	-0.6	-0.9%	-5.3%
<b>Goods-Producing Industries</b>	<b>2.6</b>	<b>2.6</b>	<b>2.5</b>	<b>0.0</b>	<b>0.1</b>	<b>0.0%</b>	<b>4.0%</b>
<b>Manufacturing</b>	<b>0.5</b>	<b>0.5</b>	<b>0.6</b>	<b>0.0</b>	<b>-0.1</b>	<b>0.0%</b>	<b>-16.7%</b>
<b>Natural Resources and Construction</b>	<b>2.1</b>	<b>2.1</b>	<b>1.9</b>	<b>0.0</b>	<b>0.2</b>	<b>0.0%</b>	<b>10.5%</b>
<b>Service-Providing Industries</b>	<b>32.0</b>	<b>32.0</b>	<b>32.2</b>	<b>0.0</b>	<b>-0.2</b>	<b>0.0%</b>	<b>-0.6%</b>
<b>Private Service Providing</b>	<b>21.2</b>	<b>21.1</b>	<b>20.8</b>	<b>0.1</b>	<b>0.4</b>	<b>0.5%</b>	<b>1.9%</b>
<b>Trade, Transportation and Utilities</b>	<b>7.1</b>	<b>6.9</b>	<b>6.0</b>	<b>0.2</b>	<b>1.1</b>	<b>2.9%</b>	<b>18.3%</b>
<b>Information</b>	<b>0.3</b>	<b>0.3</b>	<b>0.4</b>	<b>0.0</b>	<b>-0.1</b>	<b>0.0%</b>	<b>-25.0%</b>
<b>Financial Activities</b>	<b>0.8</b>	<b>0.8</b>	<b>0.8</b>	<b>0.0</b>	<b>0.0</b>	<b>0.0%</b>	<b>0.0%</b>
<b>Professional and Business Services</b>	<b>5.1</b>	<b>5.1</b>	<b>4.7</b>	<b>0.0</b>	<b>0.4</b>	<b>0.0%</b>	<b>8.5%</b>
<b>Education and Health Services</b>	<b>4.0</b>	<b>4.1</b>	<b>4.6</b>	<b>-0.1</b>	<b>-0.6</b>	<b>-2.4%</b>	<b>-13.0%</b>
<b>Leisure and Hospitality</b>	<b>3.3</b>	<b>3.3</b>	<b>3.6</b>	<b>0.0</b>	<b>-0.3</b>	<b>0.0%</b>	<b>-8.3%</b>
<b>Other Services (except Public Administration)</b>	<b>0.6</b>	<b>0.6</b>	<b>0.7</b>	<b>0.0</b>	<b>-0.1</b>	<b>0.0%</b>	<b>-14.3%</b>
<b>Government</b>	<b>10.8</b>	<b>10.9</b>	<b>11.4</b>	<b>-0.1</b>	<b>-0.6</b>	<b>-0.9%</b>	<b>-5.3%</b>
Federal Government	4.7	4.8	4.9	-0.1	-0.2	-2.1%	-4.1%
State and Local Government	6.1	6.1	6.5	0.0	-0.4	0.0%	-6.2%

Note: 8) Sierra Vista Douglas Metropolitan Area includes all of Cochise County  
For other notes and source, see next page

## Other notes and sources:

- Nonfarm employment at the state and substate level is produced from the monthly establishment survey by the Current Employment Statistics (CES)  
For more information on the establishment survey, see: <http://www.bls.gov/bls/empsitquickguide.htm>
  - Preliminary and subject to revision the following month
  - Revised
  - By place of work; does not include agricultural workers, self-employed, unpaid family members, and domestic workers
  - Detail may not add up exactly due to rounding
- MSA — Metropolitan Statistical Area  
NA — Not Available

Source: Prepared by the Arizona Office of Economic Opportunity, in cooperation with the U.S. Dept. of Labor, Bureau of Labor Statistics

Labor Force

Prepared in Cooperation with the U.S. Department of Labor, Bureau of Labor Statistics  
Arizona Office of Economic Opportunity

2020

Apache County

	JAN	FEB	MAR	APR	MAY	JUN	JUL	AUG	SEP	OCT	NOV	DEC
Civilian Labor Force	20,785	20,710	21,128	20,086	19,607	19,679	19,506	19,202	20,199	20,060	19,844	19,726
Employment	18,490	18,588	18,198	16,923	17,415	16,476	15,976	17,220	17,983	17,548	17,316	17,249
Unemployment	2,295	2,122	2,930	3,163	2,192	3,203	3,530	1,982	2,216	2,512	2,528	2,477
Unemployment rate	11.0	10.2	13.9	15.7	11.2	16.3	18.1	10.3	11.0	12.5	12.7	12.6

Adjusted to the Current Population Survey (CPS 2020) to reflect place of residence

Equal Opportunity Employer/ Program available in alternative format/ reasonable accommodations: 602-771-1110, TDD 1-800-367-8939

Labor Force

Prepared in Cooperation with the U.S. Department of Labor, Bureau of Labor Statistics  
Arizona Office of Economic Opportunity

2020

Cochise County(Sierra-Vista Douglas MSA)

	JAN	FEB	MAR	APR	MAY	JUN	JUL	AUG	SEP	OCT	NOV	DEC
Civilian Labor Force	51,901	52,169	52,093	50,443	51,250	50,825	51,701	50,003	52,305	52,130	51,669	51,269
Employment	48,897	49,345	48,245	44,850	47,570	46,355	46,865	47,374	49,408	48,745	48,302	47,992
Unemployment	3,004	2,824	3,848	5,593	3,680	4,470	4,836	2,629	2,897	3,385	3,367	3,277
Unemployment rate	5.8	5.4	7.4	11.1	7.2	8.8	9.4	5.3	5.5	6.5	6.5	6.4

Adjusted to the Current Population Survey (CPS 2020) to reflect place of residence

Equal Opportunity Employer/ Program available in alternative format/ reasonable accommodations: 602-771-1110, TDD 1-800-367-8939

Labor Force

Prepared in Cooperation with the U.S. Department of Labor, Bureau of Labor Statistics  
Arizona Office of Economic Opportunity

2020

Coconino County(Flagstaff MSA)

	JAN	FEB	MAR	APR	MAY	JUN	JUL	AUG	SEP	OCT	NOV	DEC
Civilian Labor Force	77,687	77,685	77,165	71,690	70,186	70,331	70,061	66,826	69,962	69,805	69,137	68,305
Employment	72,788	73,191	70,937	59,231	61,948	60,945	60,444	61,553	64,251	63,077	62,435	61,721
Unemployment	4,899	4,494	6,228	12,459	8,238	9,386	9,617	5,273	5,711	6,728	6,702	6,584
Unemployment rate	6.3	5.8	8.1	17.4	11.7	13.3	13.7	7.9	8.2	9.6	9.7	9.6

Adjusted to the Current Population Survey (CPS 2020) to reflect place of residence

Equal Opportunity Employer/ Program available in alternative format/ reasonable accommodations: 602-771-1110, TDD 1-800-367-8939

Labor Force

Prepared in Cooperation with the U.S. Department of Labor, Bureau of Labor Statistics  
Arizona Office of Economic Opportunity

2020

Gila County

	JAN	FEB	MAR	APR	MAY	JUN	JUL	AUG	SEP	OCT	NOV	DEC
Civilian Labor Force	21,565	21,577	21,547	21,205	20,990	20,675	20,609	20,120	21,150	20,993	20,849	20,682
Employment	20,325	20,418	19,937	18,722	19,408	18,765	18,465	18,928	19,817	19,399	19,229	19,130
Unemployment	1,240	1,159	1,610	2,483	1,582	1,910	2,144	1,192	1,333	1,594	1,620	1,552
Unemployment rate	5.8	5.4	7.5	11.7	7.5	9.2	10.4	5.9	6.3	7.6	7.8	7.5

Adjusted to the Current Population Survey (CPS 2020) to reflect place of residence

Equal Opportunity Employer/ Program available in alternative format/ reasonable accommodations: 602-771-1110, TDD 1-800-367-8939

Labor Force

Prepared in Cooperation with the U.S. Department of Labor, Bureau of Labor Statistics  
Arizona Office of Economic Opportunity

2020

Graham County

	JAN	FEB	MAR	APR	MAY	JUN	JUL	AUG	SEP	OCT	NOV	DEC
Civilian Labor Force	15,417	15,909	15,865	15,390	15,510	14,916	14,490	14,529	15,848	15,788	15,714	15,737
Employment	14,640	15,152	14,825	14,210	14,580	13,591	13,043	13,762	14,998	14,806	14,714	14,700
Unemployment	777	757	1,040	1,180	930	1,325	1,447	767	850	982	1,000	1,037
Unemployment rate	5.0	4.8	6.6	7.7	6.0	8.9	10.0	5.3	5.4	6.2	6.4	6.6

Adjusted to the Current Population Survey (CPS 2020) to reflect place of residence

Equal Opportunity Employer/ Program available in alternative format/ reasonable accommodations: 602-771-1110, TDD 1-800-367-8939

Labor Force

Prepared in Cooperation with the U.S. Department of Labor, Bureau of Labor Statistics  
Arizona Office of Economic Opportunity

2020

Greenlee County

	JAN	FEB	MAR	APR	MAY	JUN	JUL	AUG	SEP	OCT	NOV	DEC
Civilian Labor Force	4,585	4,628	4,578	4,560	4,578	4,625	4,666	4,471	4,631	4,652	4,575	4,515
Employment	4,413	4,458	4,339	4,315	4,386	4,296	4,288	4,264	4,407	4,374	4,299	4,243
Unemployment	172	170	239	245	192	329	378	207	224	278	276	272
Unemployment rate	3.8	3.7	5.2	5.4	4.2	7.1	8.1	4.6	4.8	6.0	6.0	6.0

Adjusted to the Current Population Survey (CPS 2020) to reflect place of residence

Equal Opportunity Employer/ Program available in alternative format/ reasonable accommodations: 602-771-1110, TDD 1-800-367-8939

Labor Force

Prepared in Cooperation with the U.S. Department of Labor, Bureau of Labor Statistics  
Arizona Office of Economic Opportunity

2020

La Paz County

	JAN	FEB	MAR	APR	MAY	JUN	JUL	AUG	SEP	OCT	NOV	DEC
Civilian Labor Force	9,751	9,774	9,978	9,072	8,799	8,750	8,711	8,748	9,601	9,866	9,975	9,653
Employment	9,168	9,224	9,215	8,288	8,269	8,051	7,924	8,244	9,016	9,221	9,338	9,039
Unemployment	583	550	763	784	530	699	787	504	585	645	637	614
Unemployment rate	6.0	5.6	7.6	8.6	6.0	8.0	9.0	5.8	6.1	6.5	6.4	6.4

Adjusted to the Current Population Survey (CPS 2020) to reflect place of residence

Equal Opportunity Employer/ Program available in alternative format/ reasonable accommodations: 602-771-1110, TDD 1-800-367-8939

Labor Force

Prepared in Cooperation with the U.S. Department of Labor, Bureau of Labor Statistics  
Arizona Office of Economic Opportunity

2020

Maricopa County

	JAN	FEB	MAR	APR	MAY	JUN	JUL	AUG	SEP	OCT	NOV	DEC
Civilian Labor Force	2,360,096	2,373,098	2,334,396	2,307,896	2,315,974	2,296,480	2,332,989	2,232,850	2,349,862	2,354,746	2,346,073	2,346,214
Employment	2,266,177	2,283,286	2,209,663	2,019,432	2,123,837	2,072,534	2,090,853	2,101,917	2,205,048	2,179,479	2,173,570	2,184,519
Unemployment	93,919	89,812	124,733	288,464	192,137	223,946	242,136	130,933	144,814	175,267	172,503	161,695
Unemployment rate	4.0	3.8	5.3	12.5	8.3	9.8	10.4	5.9	6.2	7.4	7.4	6.9

Adjusted to the Current Population Survey (CPS 2020) to reflect place of residence

Equal Opportunity Employer/ Program available in alternative format/ reasonable accommodations: 602-771-1110, TDD 1-800-367-8939



Labor Force

Prepared in Cooperation with the U.S. Department of Labor, Bureau of Labor Statistics  
Arizona Office of Economic Opportunity

2020

Mohave County(Lake Havasu City-Kingman MSA)

	JAN	FEB	MAR	APR	MAY	JUN	JUL	AUG	SEP	OCT	NOV	DEC
Civilian Labor Force	89,027	89,571	88,261	86,810	88,464	86,439	87,932	83,356	87,378	87,146	86,303	85,783
Employment	83,775	84,668	81,466	70,023	76,387	75,455	76,805	77,148	80,500	79,311	78,707	78,617
Unemployment	5,252	4,903	6,795	16,787	12,077	10,984	11,127	6,208	6,878	7,835	7,596	7,166
Unemployment rate	5.9	5.5	7.7	19.3	13.7	12.7	12.7	7.4	7.9	9.0	8.8	8.4

Adjusted to the Current Population Survey (CPS 2020) to reflect place of residence

Equal Opportunity Employer/ Program available in alternative format/ reasonable accommodations: 602-771-1110, TDD 1-800-367-8939

Labor Force

Prepared in Cooperation with the U.S. Department of Labor, Bureau of Labor Statistics  
Arizona Office of Economic Opportunity

2020

Navajo County

	JAN	FEB	MAR	APR	MAY	JUN	JUL	AUG	SEP	OCT	NOV	DEC
Civilian Labor Force	40,989	40,941	41,510	40,177	39,771	39,757	40,011	39,254	41,229	40,765	39,962	39,364
Employment	37,667	37,833	37,205	34,421	35,931	34,625	34,486	36,114	37,795	36,896	36,085	35,598
Unemployment	3,322	3,108	4,305	5,756	3,840	5,132	5,525	3,140	3,434	3,869	3,877	3,766
Unemployment rate	8.1	7.6	10.4	14.3	9.7	12.9	13.8	8.0	8.3	9.5	9.7	9.6

Adjusted to the Current Population Survey (CPS 2020) to reflect place of residence

Equal Opportunity Employer/ Program available in alternative format/ reasonable accommodations: 602-771-1110, TDD 1-800-367-8939

Labor Force

Prepared in Cooperation with the U.S. Department of Labor, Bureau of Labor Statistics  
Arizona Office of Economic Opportunity

2020

Pima County(Tucson MSA)

	JAN	FEB	MAR	APR	MAY	JUN	JUL	AUG	SEP	OCT	NOV	DEC
Civilian Labor Force	504,206	507,744	500,658	497,905	502,124	496,222	500,705	476,987	499,135	498,262	498,372	497,081
Employment	481,622	486,239	470,843	434,363	460,027	447,038	447,530	448,777	467,605	459,295	459,898	460,365
Unemployment	22,584	21,505	29,815	63,542	42,097	49,184	53,175	28,210	31,530	38,967	38,474	36,716
Unemployment rate	4.5	4.2	6.0	12.8	8.4	9.9	10.6	5.9	6.3	7.8	7.7	7.4

Adjusted to the Current Population Survey (CPS 2020) to reflect place of residence

Equal Opportunity Employer/ Program available in alternative format/ reasonable accommodations: 602-771-1110, TDD 1-800-367-8939

Labor Force

Prepared in Cooperation with the U.S. Department of Labor, Bureau of Labor Statistics  
Arizona Office of Economic Opportunity

2020

Pinal County

	JAN	FEB	MAR	APR	MAY	JUN	JUL	AUG	SEP	OCT	NOV	DEC
Civilian Labor Force	192,010	192,715	191,117	183,683	183,657	182,956	185,915	178,529	189,584	191,093	191,190	190,216
Employment	182,584	183,746	178,628	161,617	168,733	164,821	166,103	167,939	177,638	176,810	177,017	176,718
Unemployment	9,426	8,969	12,489	22,066	14,924	18,135	19,812	10,590	11,946	14,283	14,173	13,498
Unemployment rate	4.9	4.7	6.5	12.0	8.1	9.9	10.7	5.9	6.3	7.5	7.4	7.1

Adjusted to the Current Population Survey (CPS 2020) to reflect place of residence

Equal Opportunity Employer/ Program available in alternative format/ reasonable accommodations: 602-771-1110, TDD 1-800-367-8939

Labor Force

Prepared in Cooperation with the U.S. Department of Labor, Bureau of Labor Statistics  
Arizona Office of Economic Opportunity

2020

Santa Cruz County

	JAN	FEB	MAR	APR	MAY	JUN	JUL	AUG	SEP	OCT	NOV	DEC
Civilian Labor Force	20,067	19,873	20,149	19,320	18,821	18,760	18,517	18,104	19,099	19,284	19,447	19,363
Employment	18,466	18,442	18,038	16,248	16,788	16,215	15,509	16,226	16,964	16,816	17,133	17,258
Unemployment	1,601	1,431	2,111	3,072	2,033	2,545	3,008	1,878	2,135	2,468	2,314	2,105
Unemployment rate	8.0	7.2	10.5	15.9	10.8	13.6	16.2	10.4	11.2	12.8	11.9	10.9

Adjusted to the Current Population Survey (CPS 2020) to reflect place of residence

Equal Opportunity Employer/ Program available in alternative format/ reasonable accommodations: 602-771-1110, TDD 1-800-367-8939

Labor Force

Prepared in Cooperation with the U.S. Department of Labor, Bureau of Labor Statistics  
Arizona Office of Economic Opportunity

2020

Yavapai County(Prescott MSA)

	JAN	FEB	MAR	APR	MAY	JUN	JUL	AUG	SEP	OCT	NOV	DEC
Civilian Labor Force	107,379	108,048	106,535	109,749	109,444	108,470	109,601	105,732	109,981	110,001	108,841	107,694
Employment	102,552	103,465	100,271	94,226	100,165	98,460	99,063	100,062	103,834	102,529	101,470	100,692
Unemployment	4,827	4,583	6,264	15,523	9,279	10,010	10,538	5,670	6,147	7,472	7,371	7,002
Unemployment rate	4.5	4.2	5.9	14.1	8.5	9.2	9.6	5.4	5.6	6.8	6.8	6.5

Adjusted to the Current Population Survey (CPS 2020) to reflect place of residence

Equal Opportunity Employer/ Program available in alternative format/ reasonable accommodations: 602-771-1110, TDD 1-800-367-8939

Labor Force

Prepared in Cooperation with the U.S. Department of Labor, Bureau of Labor Statistics  
Arizona Office of Economic Opportunity

2020

Yuma County(Yuma MSA)

	JAN	FEB	MAR	APR	MAY	JUN	JUL	AUG	SEP	OCT	NOV	DEC
Civilian Labor Force	100,806	98,881	103,472	96,910	92,032	92,547	97,783	90,264	97,429	96,981	96,947	92,162
Employment	87,020	87,010	86,192	73,904	75,299	72,198	73,194	75,416	81,170	81,906	83,123	80,701
Unemployment	13,786	11,871	17,280	23,006	16,733	20,349	24,589	14,848	16,259	15,075	13,824	11,461
Unemployment rate	13.7	12.0	16.7	23.7	18.2	22.0	25.1	16.4	16.7	15.5	14.3	12.4

Adjusted to the Current Population Survey (CPS 2020) to reflect place of residence

Equal Opportunity Employer/ Program available in alternative format/ reasonable accommodations: 602-771-1110, TDD 1-800-367-8939



Government	11,300	11,500	11,400	11,200	11,200	10,500	10,300	10,900	10,900	10,800	10,900	10,800	11,000
Federal Government	4,800	4,800	4,900	4,900	5,000	4,900	4,900	5,000	5,000	4,800	4,800	4,700	4,900
State and Local Government	6,500	6,700	6,500	6,300	6,200	5,600	5,400	5,900	5,900	6,000	6,100	6,100	6,100

Benchmark year 2019, quarter 1, rev. 1/15/2021

Equal Opportunity Employer/ Program available in alternative format/ reasonable accomodations: 602-771-1110, TDD 1-800-367-8939

Nonfarm Employment

Prepared in Cooperation with the U.S. Department of Labor, Bureau of Labor Statistics

Arizona Office of Economic Opportunity

2020

Coconino County(Flagstaff MSA)

	JAN	FEB	MAR	APR	MAY	JUN	JUL	AUG	SEP	OCT	NOV	DEC	AVG
Total Nonfarm	67,200	67,600	67,100	55,600	56,300	57,100	55,700	57,700	57,800	58,200	58,200	57,700	59,700
Total Private	47,000	47,300	46,800	35,600	37,700	38,900	38,600	39,300	39,400	40,000	40,300	40,300	40,900
Goods Producing	6,100	6,100	6,100	5,600	5,900	6,000	5,900	6,000	6,000	6,200	6,200	6,200	6,000
Mining and Construction	2,300	2,300	2,300	2,100	2,300	2,300	2,200	2,300	2,300	2,400	2,400	2,400	2,300
Manufacturing	3,800	3,800	3,800	3,500	3,600	3,700	3,700	3,700	3,700	3,800	3,800	3,800	3,700
Service-Providing	61,100	61,500	61,000	50,000	50,400	51,100	49,800	51,700	51,800	52,000	52,000	51,500	53,700
Private Service-Providing	40,900	41,200	40,700	30,000	31,800	32,900	32,700	33,300	33,400	33,800	34,100	34,100	34,900
Trade, Transportation, and Utilities	9,400	9,400	9,300	8,700	8,500	9,000	9,100	9,500	9,500	9,300	9,600	9,700	9,300
Information	400	400	400	400	400	400	400	400	400	400	400	400	400
Financial Activities	1,500	1,500	1,500	1,500	1,500	1,500	1,500	1,500	1,500	1,500	1,500	1,500	1,500
Professional and Business Services	3,300	3,400	3,500	3,300	3,500	3,600	3,600	3,600	3,500	3,500	3,500	3,400	3,500
Educational and Health Services	9,600	9,700	9,600	8,800	8,800	8,800	8,700	8,800	8,800	8,900	8,900	8,900	9,000
Leisure and Hospitality	14,900	15,000	14,600	5,900	7,800	8,200	8,000	8,100	8,300	8,700	8,700	8,800	9,800
Other Services	1,800	1,800	1,800	1,400	1,300	1,400	1,400	1,400	1,400	1,500	1,500	1,400	1,500
Government	20,200	20,300	20,300	20,000	18,600	18,200	17,100	18,400	18,400	18,200	17,900	17,400	18,800
Federal Government	2,400	2,400	2,400	2,600	2,700	2,900	2,600	2,700	2,900	2,700	2,500	2,500	2,600
State and Local Government	17,800	17,900	17,900	17,400	15,900	15,300	14,500	15,700	15,500	15,500	15,400	14,900	16,100

Benchmark year 2019, quarter 1, rev. 1/15/2021

Equal Opportunity Employer/ Program available in alternative format/ reasonable accomodations: 602-771-1110, TDD 1-800-367-8939

Nonfarm Employment

Prepared in Cooperation with the U.S. Department of Labor, Bureau of Labor Statistics

Arizona Office of Economic Opportunity

2020

Gila County

	JAN	FEB	MAR	APR	MAY	JUN	JUL	AUG	SEP	OCT	NOV	DEC	AVG
Total Nonfarm	14,775	14,925	14,850	14,125	14,175	14,125	13,700	14,250	14,225	14,225	14,225	14,250	14,350

Total Private	9,350	9,400	9,400	8,625	8,700	8,800	8,700	8,750	8,725	8,750	8,725	8,725	8,900
Goods Producing	2,875	2,875	2,875	2,800	2,800	2,825	2,825	2,825	2,825	2,825	2,850	2,875	2,850
Service-Providing	11,900	12,050	11,975	11,325	11,375	11,300	10,875	11,425	11,400	11,400	11,375	11,375	11,500
Private Service-Providing	6,475	6,525	6,525	5,825	5,900	5,975	5,875	5,925	5,900	5,925	5,875	5,850	6,050
Trade, Transportation, and Utilities	2,075	2,075	2,075	1,975	2,025	2,025	2,000	2,000	1,975	1,975	1,975	2,000	2,025
Other Private Service-Providing	4,400	4,450	4,450	3,850	3,875	3,950	3,875	3,925	3,925	3,950	3,900	3,850	4,025
Government	5,425	5,525	5,450	5,500	5,475	5,325	5,000	5,500	5,500	5,475	5,500	5,525	5,450
Federal Government	225	250	250	250	250	250	250	275	250	225	200	200	250
State and Local Government	5,200	5,275	5,200	5,250	5,225	5,075	4,750	5,225	5,250	5,250	5,300	5,325	5,200

Benchmark year 2019, quarter 1, rev. 1/15/2021

Equal Opportunity Employer/ Program available in alternative format/ reasonable accommodations: 602-771-1110, TDD 1-800-367-8939

Nonfarm Employment

Prepared in Cooperation with the U.S. Department of Labor, Bureau of Labor Statistics

Arizona Office of Economic Opportunity

2020

Graham County

	JAN	FEB	MAR	APR	MAY	JUN	JUL	AUG	SEP	OCT	NOV	DEC	AVG
Total Nonfarm	9,175	9,500	9,525	9,200	9,125	8,775	8,275	8,900	9,325	9,425	9,450	9,475	9,175
Total Private	6,425	6,475	6,500	6,225	6,225	6,250	6,225	6,300	6,300	6,375	6,400	6,475	6,350
Goods Producing	1,875	1,900	1,900	1,850	1,850	1,875	1,900	1,900	1,875	1,925	1,900	1,950	1,900
Service-Providing	7,300	7,600	7,625	7,350	7,275	6,900	6,375	7,000	7,450	7,500	7,550	7,525	7,275
Private Service-Providing	4,550	4,575	4,600	4,375	4,375	4,375	4,325	4,400	4,425	4,450	4,500	4,525	4,450
Trade, Transportation, and Utilities	1,775	1,775	1,775	1,750	1,750	1,775	1,775	1,800	1,775	1,825	1,850	1,875	1,800
Other Private Service-Providing	2,775	2,800	2,825	2,625	2,625	2,600	2,550	2,600	2,650	2,625	2,650	2,650	2,650
Government	2,750	3,025	3,025	2,975	2,900	2,525	2,050	2,600	3,025	3,050	3,050	3,000	2,825
Federal Government	375	375	375	375	375	375	375	400	375	375	375	375	375
State and Local Government	2,375	2,650	2,650	2,600	2,525	2,150	1,675	2,200	2,650	2,675	2,675	2,625	2,450

Benchmark year 2019, quarter 1, rev. 1/15/2021

Equal Opportunity Employer/ Program available in alternative format/ reasonable accommodations: 602-771-1110, TDD 1-800-367-8939

Nonfarm Employment

Prepared in Cooperation with the U.S. Department of Labor, Bureau of Labor Statistics

Arizona Office of Economic Opportunity

2020

Greenlee County

	JAN	FEB	MAR	APR	MAY	JUN	JUL	AUG	SEP	OCT	NOV	DEC	AVG
Total Nonfarm	5,225	5,250	5,250	5,250	5,150	5,250	5,150	5,200	5,175	5,200	5,200	5,150	5,175
Total Private	4,650	4,675	4,675	4,675	4,575	4,675	4,700	4,650	4,575	4,625	4,625	4,575	4,625

Goods Producing	3,725	3,750	3,750	3,725	3,625	3,725	3,725	3,675	3,625	3,675	3,650	3,575	3,675
Service-Providing	1,500	1,500	1,500	1,525	1,525	1,525	1,425	1,525	1,550	1,525	1,550	1,575	1,500
Private Service-Providing	925	925	925	950	950	950	975	975	950	950	975	1,000	950
Trade, Transportation, and Utilities	500	500	500	500	500	500	525	525	500	500	500	525	500
Other Private Service-Providing	425	425	425	450	450	450	450	450	450	450	475	475	450
Government	575	575	575	575	575	575	450	550	600	575	575	575	550
Federal Government	25	25	25	25	25	50	25	50	50	25	25	25	25
State and Local Government	550	550	550	550	550	525	425	500	550	550	550	550	525

Benchmark year 2019, quarter 1, rev. 1/15/2021

Equal Opportunity Employer/ Program available in alternative format/ reasonable accommodations: 602-771-1110, TDD 1-800-367-8939

Nonfarm Employment

Prepared in Cooperation with the U.S. Department of Labor, Bureau of Labor Statistics

Arizona Office of Economic Opportunity

2020

La Paz County

	JAN	FEB	MAR	APR	MAY	JUN	JUL	AUG	SEP	OCT	NOV	DEC	AVG
Total Nonfarm	5,800	5,900	5,875	5,700	5,725	5,650	5,525	5,650	5,650	5,700	5,675	5,750	5,700
Total Private	3,475	3,575	3,575	3,400	3,425	3,375	3,400	3,375	3,350	3,375	3,350	3,425	3,425
Goods Producing	200	225	225	225	225	200	200	175	175	175	175	175	200
Service-Providing	5,600	5,675	5,650	5,475	5,500	5,450	5,325	5,475	5,475	5,525	5,500	5,575	5,500
Private Service-Providing	3,275	3,350	3,350	3,175	3,200	3,175	3,200	3,200	3,175	3,200	3,175	3,250	3,225
Trade, Transportation, and Utilities	1,675	1,700	1,700	1,650	1,650	1,650	1,650	1,675	1,650	1,675	1,700	1,725	1,675
Other Private Service-Providing	1,600	1,650	1,650	1,525	1,550	1,525	1,550	1,525	1,525	1,525	1,475	1,525	1,550
Government	2,325	2,325	2,300	2,300	2,300	2,275	2,125	2,275	2,300	2,325	2,325	2,325	2,275
Federal Government	375	350	350	350	350	350	350	350	375	375	350	375	350
State and Local Government	1,950	1,975	1,950	1,950	1,950	1,925	1,775	1,925	1,925	1,950	1,975	1,950	1,925

Benchmark year 2019, quarter 1, rev. 1/15/2021

Equal Opportunity Employer/ Program available in alternative format/ reasonable accommodations: 602-771-1110, TDD 1-800-367-8939

Nonfarm Employment

Prepared in Cooperation with the U.S. Department of Labor, Bureau of Labor Statistics

Arizona Office of Economic Opportunity

2020

Maricopa County

	JAN	FEB	MAR	APR	MAY	JUN	JUL	AUG	SEP	OCT	NOV	DEC	AVG
Total Nonfarm	2,152,100	2,167,100	2,153,800	1,960,100	1,986,400	2,004,700	1,995,000	2,041,800	2,071,700	2,105,000	2,130,300	2,139,500	2,075,400
Total Private	1,918,700	1,930,200	1,919,000	1,728,900	1,766,400	1,813,200	1,802,600	1,820,900	1,844,400	1,877,500	1,902,500	1,912,800	1,852,900
Goods Producing	264,600	266,800	266,400	255,200	255,900	258,600	256,400	257,600	259,800	261,800	265,200	261,200	260,800



Mining and Construction	135,300	137,600	136,800	134,500	134,000	133,700	132,200	132,900	134,700	136,800	139,000	134,800	135,200
Manufacturing	129,300	129,200	129,600	120,700	121,900	124,900	124,200	124,700	125,100	125,000	126,200	126,400	125,600
Service-Providing	1,887,500	1,900,300	1,887,400	1,704,900	1,730,500	1,746,100	1,738,600	1,784,200	1,811,900	1,843,200	1,865,100	1,878,300	1,814,600
Private Service-Providing	1,654,100	1,663,400	1,652,600	1,473,700	1,510,500	1,554,600	1,546,200	1,563,300	1,584,600	1,615,700	1,637,300	1,651,600	1,592,100
Trade, Transportation, and Utilities	405,900	405,100	407,000	382,300	390,100	398,000	398,600	403,400	407,800	412,200	426,300	434,300	405,900
Information	40,100	40,200	39,800	36,900	37,000	37,400	37,600	38,000	37,700	37,600	36,900	37,200	38,000
Financial Activities	203,000	203,200	200,900	200,200	200,100	202,000	201,300	203,000	203,700	205,600	206,300	204,600	202,800
Professional and Business Services	365,300	364,600	361,000	336,600	333,900	336,400	337,900	340,000	344,700	355,700	358,300	361,200	349,600
Educational and Health Services	342,200	346,200	345,200	315,900	319,000	325,000	326,900	331,300	333,800	338,500	340,300	343,900	334,000
Leisure and Hospitality	228,800	235,600	229,400	141,800	163,300	185,400	173,700	177,000	185,900	195,000	197,800	199,200	192,700
Other Services	68,800	68,500	69,300	60,000	67,100	70,400	70,200	70,600	71,000	71,100	71,400	71,200	69,100
Government	233,400	236,900	234,800	231,200	220,000	191,500	192,400	220,900	227,300	227,500	227,800	226,700	222,500
Federal Government	22,000	21,900	22,200	22,600	22,600	22,500	22,900	25,300	24,800	23,000	21,800	21,800	22,800
State and Local Government	211,400	215,000	212,600	208,600	197,400	169,000	169,500	195,600	202,500	204,500	206,000	204,900	199,700

Benchmark year 2019, quarter 1, rev. 1/15/2021

Equal Opportunity Employer/ Program available in alternative format/ reasonable accommodations: 602-771-1110, TDD 1-800-367-8939

Nonfarm Employment

Prepared in Cooperation with the U.S. Department of Labor, Bureau of Labor Statistics

Arizona Office of Economic Opportunity

2020

Mohave County(Lake Havasu City-Kingman MSA)

	JAN	FEB	MAR	APR	MAY	JUN	JUL	AUG	SEP	OCT	NOV	DEC	AVG
Total Nonfarm	52,600	53,400	52,700	45,700	48,300	48,700	48,900	50,100	50,300	50,900	51,500	51,300	50,400
Total Private	44,300	44,700	44,500	37,500	40,300	41,100	41,400	42,000	42,200	43,000	43,500	43,500	42,300
Goods Producing	6,400	6,500	6,500	6,100	6,300	6,500	6,500	6,600	6,600	6,700	6,700	6,800	6,500
Mining and Construction	3,300	3,400	3,400	3,100	3,400	3,500	3,500	3,600	3,600	3,700	3,700	3,800	3,500
Manufacturing	3,100	3,100	3,100	3,000	2,900	3,000	3,000	3,000	3,000	3,000	3,000	3,000	3,000
Service-Providing	46,200	46,900	46,200	39,600	42,000	42,200	42,400	43,500	43,700	44,200	44,800	44,500	43,900
Private Service-Providing	37,900	38,200	38,000	31,400	34,000	34,600	34,900	35,400	35,600	36,300	36,800	36,700	35,800
Trade, Transportation, and Utilities	12,800	12,800	12,800	12,100	13,300	13,100	13,200	13,300	13,400	13,700	13,800	13,900	13,200
Information	500	500	500	500	500	500	500	400	500	400	500	500	500
Financial Activities	1,800	1,800	1,800	1,800	1,800	1,800	1,800	1,800	1,800	1,800	1,800	1,800	1,800
Professional and Business Services	4,400	4,500	4,600	3,300	3,800	4,100	4,300	4,600	4,600	4,600	4,900	4,700	4,400
Educational and Health Services	9,200	9,300	9,000	8,600	8,600	8,500	8,500	8,700	8,700	8,800	8,800	8,800	8,800
Leisure and Hospitality	7,300	7,400	7,400	3,600	4,400	4,900	4,900	4,900	4,900	5,200	5,200	5,200	5,400
Other Services	1,900	1,900	1,900	1,500	1,600	1,700	1,700	1,700	1,700	1,800	1,800	1,800	1,800
Government	8,300	8,700	8,200	8,200	8,000	7,600	7,500	8,100	8,100	7,900	8,000	7,800	8,000
Federal Government	500	500	500	500	500	500	500	800	700	500	500	500	500
State and Local Government	7,800	8,200	7,700	7,700	7,500	7,100	7,000	7,300	7,400	7,400	7,500	7,300	7,500

Benchmark year 2019, quarter 1, rev. 1/15/2021

Equal Opportunity Employer/ Program available in alternative format/ reasonable accommodations: 602-771-1110, TDD 1-800-367-8939

Nonfarm Employment

Prepared in Cooperation with the U.S. Department of Labor, Bureau of Labor Statistics

Arizona Office of Economic Opportunity

2020

Navajo County

	JAN	FEB	MAR	APR	MAY	JUN	JUL	AUG	SEP	OCT	NOV	DEC	AVG
Total Nonfarm	26,625	26,800	26,950	25,125	25,475	25,200	24,750	26,450	26,450	26,350	25,950	25,675	25,950
Total Private	17,075	17,150	17,200	15,675	15,925	16,125	16,025	16,300	16,125	16,025	15,625	15,425	16,200
Goods Producing	1,825	1,850	1,800	1,475	1,500	1,525	1,500	1,500	1,500	1,525	1,475	1,425	1,600
Mining and Construction	1,525	1,525	1,500	1,250	1,275	1,275	1,250	1,250	1,250	1,275	1,225	1,175	1,325
Manufacturing	300	325	300	225	225	250	250	250	250	250	250	250	275
Service-Providing	24,800	24,950	25,150	23,650	23,975	23,675	23,250	24,950	24,950	24,825	24,475	24,250	24,350
Private Service-Providing	15,250	15,300	15,400	14,200	14,425	14,600	14,525	14,800	14,625	14,500	14,150	14,000	14,600
Trade, Transportation, and Utilities	4,500	4,525	4,525	4,325	4,400	4,525	4,500	4,525	4,450	4,375	4,400	4,375	4,450
Information	250	250	250	250	225	225	250	225	225	225	225	200	225
Financial Activities	625	625	625	475	475	475	475	475	475	475	475	475	500
Professional and Business Services	1,175	1,175	1,200	1,075	1,075	1,075	1,075	1,050	1,050	1,050	1,025	975	1,075
Educational and Health Services	4,675	4,675	4,675	4,450	4,475	4,350	4,275	4,525	4,550	4,575	4,575	4,600	4,525
Leisure and Hospitality	3,500	3,525	3,575	3,150	3,300	3,450	3,450	3,500	3,400	3,325	2,975	2,900	3,325
Other Services	525	525	550	475	475	500	500	500	475	475	475	475	500
Government	9,550	9,650	9,750	9,450	9,550	9,075	8,725	10,150	10,325	10,325	10,325	10,250	9,750
Federal Government	1,750	1,775	1,850	1,775	1,850	1,900	1,775	1,900	1,900	1,850	1,825	1,825	1,825
State and Local Government	7,800	7,875	7,900	7,675	7,700	7,175	6,950	8,250	8,425	8,475	8,500	8,425	7,925

Benchmark year 2019, quarter 1, rev. 1/15/2021

Equal Opportunity Employer/ Program available in alternative format/ reasonable accommodations: 602-771-1110, TDD 1-800-367-8939

Nonfarm Employment

Prepared in Cooperation with the U.S. Department of Labor, Bureau of Labor Statistics

Arizona Office of Economic Opportunity

2020

Pima County(Tucson MSA)

	JAN	FEB	MAR	APR	MAY	JUN	JUL	AUG	SEP	OCT	NOV	DEC	AVG
Total Nonfarm	391,100	395,600	393,200	361,300	368,900	369,600	364,300	372,700	374,900	378,700	384,700	385,000	378,300
Total Private	309,600	312,300	310,800	280,300	289,500	300,500	295,000	295,400	295,900	299,600	305,400	306,300	300,100
Goods Producing	47,400	47,600	47,100	45,900	47,300	47,300	46,800	46,900	46,200	46,700	46,700	46,900	46,900
Mining and Construction	19,800	20,000	19,800	18,700	20,200	20,300	20,000	20,100	19,900	20,300	20,500	20,500	20,000
Manufacturing	27,600	27,600	27,300	27,200	27,100	27,000	26,800	26,800	26,300	26,400	26,200	26,400	26,900

Service-Providing	343,700	348,000	346,100	315,400	321,600	322,300	317,500	325,800	328,700	332,000	338,000	338,100	331,400
Private Service-Providing	262,200	264,700	263,700	234,400	242,200	253,200	248,200	248,500	249,700	252,900	258,700	259,400	253,200
Trade, Transportation, and Utilities	62,700	62,400	63,000	60,500	61,600	64,100	63,800	65,000	65,300	66,500	69,800	70,900	64,600
Information	5,400	5,600	5,500	3,900	3,900	4,100	4,000	4,100	4,100	4,100	4,100	4,100	4,400
Financial Activities	17,100	17,500	17,400	17,000	16,500	16,400	16,300	16,200	16,000	15,800	16,400	16,300	16,600
Professional and Business Services	50,400	50,900	50,100	46,600	46,900	47,400	46,500	46,100	45,800	46,200	45,400	45,600	47,300
Educational and Health Services	69,400	69,900	69,500	64,000	64,800	66,000	65,800	65,500	65,900	66,500	67,300	67,700	66,900
Leisure and Hospitality	43,500	44,600	44,300	30,900	35,500	41,600	38,400	38,200	39,200	40,300	42,200	41,300	40,000
Other Services	13,700	13,800	13,900	11,500	13,000	13,600	13,400	13,400	13,400	13,500	13,500	13,500	13,400
Government	81,500	83,300	82,400	81,000	79,400	69,100	69,300	77,300	79,000	79,100	79,300	78,700	78,300
Federal Government	13,000	13,000	13,100	13,100	13,100	13,100	13,000	13,500	13,600	13,200	12,900	12,900	13,100
State and Local Government	68,500	70,300	69,300	67,900	66,300	56,000	56,300	63,800	65,400	65,900	66,400	65,800	65,200

Benchmark year 2019, quarter 1, rev. 1/15/2021

Equal Opportunity Employer/ Program available in alternative format/ reasonable accommodations: 602-771-1110, TDD 1-800-367-8939

Nonfarm Employment

Prepared in Cooperation with the U.S. Department of Labor, Bureau of Labor Statistics

Arizona Office of Economic Opportunity

2020

Pinal County

	JAN	FEB	MAR	APR	MAY	JUN	JUL	AUG	SEP	OCT	NOV	DEC	AVG
Total Nonfarm	62,375	63,275	63,250	54,750	54,900	53,775	53,325	55,800	56,125	56,375	56,975	57,100	57,350
Total Private	42,575	43,100	43,025	34,725	34,525	34,300	34,250	34,575	34,600	34,950	35,475	35,700	36,825
Goods Producing	7,650	7,700	7,725	6,950	6,950	7,025	7,125	7,075	7,100	7,150	7,125	7,175	7,225
Mining and Construction	3,500	3,500	3,550	3,150	3,150	3,200	3,250	3,200	3,200	3,225	3,175	3,200	3,275
Manufacturing	4,150	4,200	4,175	3,800	3,800	3,825	3,875	3,875	3,900	3,925	3,950	3,975	3,950
Service-Providing	54,725	55,575	55,525	47,800	47,950	46,750	46,200	48,725	49,025	49,225	49,850	49,925	50,125
Private Service-Providing	34,925	35,400	35,300	27,775	27,575	27,275	27,125	27,500	27,500	27,800	28,350	28,525	29,600
Trade, Transportation, and Utilities	11,250	11,275	11,350	9,575	9,625	9,625	9,675	9,700	9,600	9,775	10,050	10,175	10,150
Information	575	575	575	450	450	450	425	425	425	425	425	425	475
Financial Activities	1,550	1,550	1,575	1,275	1,250	1,225	1,225	1,225	1,225	1,225	1,275	1,250	1,325
Professional and Business Services	6,725	6,700	6,725	5,525	5,450	5,450	5,400	5,425	5,450	5,525	5,475	5,450	5,775
Educational and Health Services	6,850	6,925	6,975	5,675	5,700	5,475	5,400	5,750	5,775	5,725	5,850	5,875	6,000
Leisure and Hospitality	6,300	6,675	6,425	4,175	3,975	3,925	3,875	3,900	3,925	4,025	4,175	4,225	4,625
Other Services	1,675	1,700	1,675	1,100	1,125	1,125	1,125	1,075	1,100	1,100	1,100	1,125	1,250
Government	19,800	20,175	20,225	20,025	20,375	19,475	19,075	21,225	21,525	21,425	21,500	21,400	20,525
Federal Government	1,475	1,450	1,450	1,375	1,375	1,400	1,400	1,425	1,425	1,400	1,375	1,400	1,425
State and Local Government	18,325	18,725	18,775	18,650	19,000	18,075	17,675	19,800	20,100	20,025	20,125	20,000	19,100

Benchmark year 2019, quarter 1, rev. 1/15/2021

Equal Opportunity Employer/ Program available in alternative format/ reasonable accommodations: 602-771-1110, TDD 1-800-367-8939

Nonfarm Employment

Prepared in Cooperation with the U.S. Department of Labor, Bureau of Labor Statistics  
 Arizona Office of Economic Opportunity

2020

Santa Cruz County

	JAN	FEB	MAR	APR	MAY	JUN	JUL	AUG	SEP	OCT	NOV	DEC	AVG
Total Nonfarm	13,475	13,500	13,475	12,175	12,200	12,000	11,225	12,075	12,025	12,275	12,675	12,850	12,475
Total Private	9,700	9,700	9,675	8,375	8,400	8,300	7,725	7,700	7,675	7,925	8,300	8,475	8,500
Goods Producing	700	675	675	550	550	550	525	525	525	525	525	525	575
Service-Providing	12,775	12,825	12,800	11,625	11,650	11,450	10,700	11,550	11,500	11,750	12,150	12,325	11,900
Private Service-Providing	9,000	9,025	9,000	7,825	7,850	7,750	7,200	7,175	7,150	7,400	7,775	7,950	7,925
Trade, Transportation, and Utilities	5,650	5,625	5,600	5,075	5,100	5,100	4,625	4,500	4,500	4,650	5,000	5,150	5,050
Other Private Service-Providing	3,350	3,400	3,400	2,750	2,750	2,650	2,575	2,675	2,650	2,750	2,775	2,800	2,875
Government	3,775	3,800	3,800	3,800	3,800	3,700	3,500	4,375	4,350	4,350	4,375	4,375	3,975
Federal Government	1,725	1,725	1,725	1,725	1,725	1,725	1,750	1,750	1,750	1,750	1,750	1,750	1,725
State and Local Government	2,050	2,075	2,075	2,075	2,075	1,975	1,750	2,625	2,600	2,600	2,625	2,625	2,250

Benchmark year 2019, quarter 1, rev. 1/15/2021

Equal Opportunity Employer/ Program available in alternative format/ reasonable accomodations: 602-771-1110, TDD 1-800-367-8939

Nonfarm Employment

Prepared in Cooperation with the U.S. Department of Labor, Bureau of Labor Statistics  
 Arizona Office of Economic Opportunity

2020

Yavapai County(Prescott MSA)

	JAN	FEB	MAR	APR	MAY	JUN	JUL	AUG	SEP	OCT	NOV	DEC	AVG
Total Nonfarm	65,400	66,200	65,800	62,100	63,900	64,600	64,000	65,900	65,800	66,800	67,000	66,400	65,300
Total Private	54,300	54,700	54,400	50,800	52,800	54,500	54,000	54,900	54,600	55,800	56,000	55,900	54,400
Goods Producing	9,800	9,900	9,900	9,700	9,800	10,200	10,300	10,400	10,400	10,400	10,500	10,600	10,200
Mining and Construction	6,100	6,200	6,200	6,200	6,200	6,500	6,500	6,700	6,700	6,700	6,700	6,700	6,500
Manufacturing	3,700	3,700	3,700	3,500	3,600	3,700	3,800	3,700	3,700	3,700	3,800	3,900	3,700
Service-Providing	55,600	56,300	55,900	52,400	54,100	54,400	53,700	55,500	55,400	56,400	56,500	55,800	55,200
Private Service-Providing	44,500	44,800	44,500	41,100	43,000	44,300	43,700	44,500	44,200	45,400	45,500	45,300	44,200
Trade, Transportation, and Utilities	12,500	12,400	12,400	12,300	12,400	12,700	12,500	12,600	12,400	12,600	12,900	13,000	12,600
Information	500	500	500	500	500	500	500	500	500	500	500	500	500
Financial Activities	2,100	2,100	2,100	2,100	2,100	2,100	2,100	2,100	2,100	2,100	2,100	2,100	2,100
Professional and Business Services	4,400	4,500	4,400	4,200	4,300	4,200	4,300	4,400	4,200	4,300	4,300	4,300	4,300
Educational and Health Services	12,500	12,600	12,500	11,900	11,900	12,000	12,000	12,500	12,600	12,700	12,500	12,600	12,400
Leisure and Hospitality	10,200	10,400	10,300	8,300	9,900	10,700	10,200	10,200	10,200	11,000	11,000	10,700	10,300
Other Services	2,300	2,300	2,300	1,800	1,900	2,100	2,100	2,200	2,200	2,200	2,200	2,100	2,100

Government	11,100	11,500	11,400	11,300	11,100	10,100	10,000	11,000	11,200	11,000	11,000	10,500	10,900
Federal Government	1,500	1,500	1,600	1,700	1,700	1,700	1,600	1,900	1,900	1,700	1,600	1,600	1,700
State and Local Government	9,600	10,000	9,800	9,600	9,400	8,400	8,400	9,100	9,300	9,300	9,400	8,900	9,300

Benchmark year 2019, quarter 1, rev. 1/15/2021

Equal Opportunity Employer/ Program available in alternative format/ reasonable accomodations: 602-771-1110, TDD 1-800-367-8939

Nonfarm Employment

Prepared in Cooperation with the U.S. Department of Labor, Bureau of Labor Statistics

Arizona Office of Economic Opportunity

2020

Yuma County(Yuma MSA)

	JAN	FEB	MAR	APR	MAY	JUN	JUL	AUG	SEP	OCT	NOV	DEC	AVG
Total Nonfarm	58,800	59,300	59,100	52,300	52,900	51,800	52,000	53,600	53,800	54,100	54,800	54,700	54,800
Total Private	43,900	44,300	44,100	37,900	38,600	38,700	39,000	39,300	39,300	39,700	40,400	40,300	40,500
Goods Producing	5,800	5,900	5,900	5,500	5,200	5,000	4,900	5,000	5,000	5,200	5,400	5,300	5,300
Mining and Construction	3,000	3,100	3,100	2,700	2,600	2,400	2,300	2,400	2,400	2,500	2,500	2,500	2,600
Manufacturing	2,800	2,800	2,800	2,800	2,600	2,600	2,600	2,600	2,600	2,700	2,900	2,800	2,700
Service-Providing	53,000	53,400	53,200	46,800	47,700	46,800	47,100	48,600	48,800	48,900	49,400	49,400	49,400
Private Service-Providing	38,100	38,400	38,200	32,400	33,400	33,700	34,100	34,300	34,300	34,500	35,000	35,000	35,100
Trade, Transportation, and Utilities	12,200	12,300	12,200	11,200	11,200	11,400	11,700	11,800	11,800	11,400	11,900	12,100	11,800
Information	400	400	400	400	400	400	400	400	400	400	400	400	400
Financial Activities	2,100	2,100	2,100	2,000	2,000	2,000	2,000	2,100	2,100	2,100	2,100	2,100	2,100
Professional and Business Services	6,300	6,300	6,400	5,500	5,400	5,400	5,600	5,500	5,600	5,800	5,700	5,800	5,800
Educational and Health Services	8,600	8,600	8,500	7,800	7,600	7,400	7,400	7,600	7,500	7,500	7,600	7,700	7,800
Leisure and Hospitality	6,700	6,900	6,800	3,900	5,200	5,400	5,300	5,100	5,100	5,500	5,400	5,000	5,500
Other Services	1,800	1,800	1,800	1,600	1,600	1,700	1,700	1,800	1,800	1,800	1,900	1,900	1,800
Government	14,900	15,000	15,000	14,400	14,300	13,100	13,000	14,300	14,500	14,400	14,400	14,400	14,300
Federal Government	3,700	3,700	3,700	3,700	3,700	3,700	3,700	3,900	3,900	3,800	3,700	3,800	3,800
State and Local Government	11,200	11,300	11,300	10,700	10,600	9,400	9,300	10,400	10,600	10,600	10,700	10,600	10,600

Benchmark year 2019, quarter 1, rev. 1/15/2021

Equal Opportunity Employer/ Program available in alternative format/ reasonable accomodations: 602-771-1110, TDD 1-800-367-8939

### **About This Publication**

*Arizona's Workforce* is published 14 times a year by the State of Arizona Office of Economic Opportunity (OEO) — 12 times as the monthly Employment Report and twice a year as a two-year Forecast Report. OEO is the state agency responsible for labor market information and demographic data for the state of Arizona.

Material published in *Arizona's Workforce* is in the public domain and can be reproduced without further permission. Appropriate citations are requested.

**Next Releases:**

***Short-Term Employment Projections, Thursday, February 18<sup>th</sup>, 2021, 10:00 am***

***January Employment Report, Thursday, March 11<sup>th</sup>, 2021, 10:00 am***

***Location: ACA Conference Rooms, Camelback, 100 North 7th Avenue, Phoenix, AZ 85007***

#### **Office of Economic Opportunity**

Sandra Watson	Interim Director
Doug Walls	Research Administrator
Stephanie Faltermeier	Labor System Manager

**On the web:** <https://laborstats.az.gov/>

**Phone:** 602-771-2222

To be placed on the *Arizona Workforce* email distribution list, or to send feedback or questions, contact:

[labor.info@azstats.gov](mailto:labor.info@azstats.gov)

### **— Equal Opportunity Employer/Program —**

Under Titles VI and VII of the Civil Rights Act of 1964 (Title VI & VII), and the Americans with Disabilities Act of 1990 (ADA), Section 504 of the Rehabilitation Act of 1973, and the Age Discrimination Act of 1975, the Department prohibits discrimination in admissions, programs, services, activities, or employment based on race, color, religion, sex, national origin, age, and disability. The Department must make a reasonable accommodation to allow a person with a disability to take part in a program, service or activity. For example, this means if necessary, the Department must provide sign language interpreters for people who are deaf, a wheelchair accessible location, or enlarged print materials. It also means that the Department will take any other reasonable action that allows you to take part in and understand a program or activity, including making reasonable changes to an activity. If you believe that you will not be able to understand or take part in a program or activity because of your disability, please let us know of your disability needs in advance if at all possible. To request this document in alternative format or for further information about this policy, contact the Department of Economic Security, Division of Developmental Disabilities ADA Coordinator at 602 542-6825 ; TTY/TDD Services: 7-1-1.

This page left intentionally blank.